

English

Articulated loaders

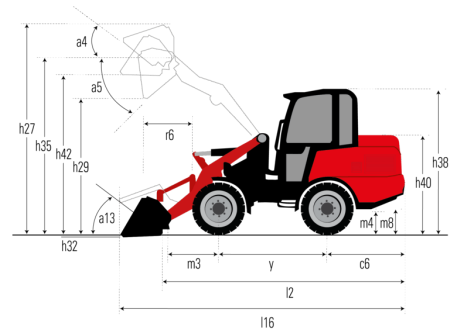
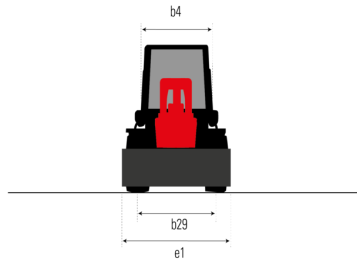
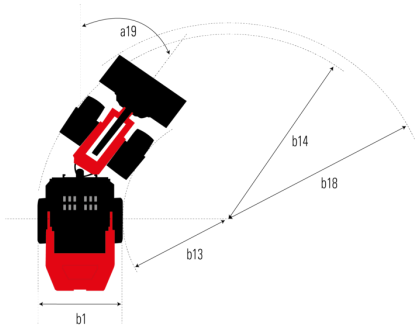
MLA/MLA-T

# **MLA 4-50 H**

## MACHINEBOOK



Capacities		Metric
Static tipping load with bucket (straight)		1540 kg
Static tipping load with bucket (full turn)		1355 kg
Static tipping load with forks (straight)		1175 kg
Static tipping load with forks (full turn)		1030 kg
Max. height of bucket pivot point	h35	2836 mm
Weight and dimensions		
Unladen weight (with forks) with 4-post canopy		2316 kg
Wheelbase	y	1650 mm
Overall cab width	b4	991 mm
Overall height with 4 posts canopy	h38	2258 mm
Dump reach - Full height	r6	479 mm
Hood Height	h40	1405 mm
Overall Operating Height - Fully Raised	h27	3636 mm
Articulation angle	a19	45 °
Maximum oscillation angle		10 °
Overall length with bucket	l16	4279 mm
Overall width less bucket	b1	1100 mm
Overall length - Less Bucket	l2	3583 mm
Rear overhang	c6	1120 mm
Dump angle - Fully raised	a5	42 °
Dump Height - Fully Raised	h29	2126 mm
Maximum Rollback Angle - Fully Raised	a4	48 °
Maximum Rollback Angle at Ground	a13	50 °
Digging Position	h32	-79 mm
Ground clearance	m4	320 mm
Clearance Radius - Front with Bucket	b18	3246 mm
Clearance Radius - Less bucket	b14	2767 mm
Ground Plane to Bucket Edge Height	h42	2655 mm
Tread width (wheel center)	b29	836 mm
Attachment Pivot Clearance		103 mm
Height from ground to axle center	m8	214 mm
Bucket Width	e1	1520 mm
Front Wheel Center to Pivot Pin	m3	669 mm
Height to Hinge Pin at Fully Raised	h28	2900 mm
Engine		
Engine brand		Perkins
Engine model		403J-E17T
Engine norm		Stage V
Number of cylinders		3
I.C. Engine power rating / Power		48 Hp / 36 kW
Max. torque / Engine rotation		166 Nm / 1600 rpm
Engine cooling system		Water
Transmission		
Transmission type		Hydrostatic
Number of gears (forward / reverse)		2 / 2
Max. travel speed (may vary according to applicable regulations)		20 km/h
Service brake		Inching Brake
Hydraulics		
Hydraulic pump type		Gear pump
Hydraulic flow - Pressure		60 l/min / 207 bar
High-Flow Option (l/min)		60 l/min
Tank capacities		
Hydraulic oil		48 l
Fuel tank		45 l




BUCKETS

**Bucket 4 in 1 (Compact machines)**



**Bucket 4 in 1 (Compact machines) - B4x1 1080 / 170**

Heaped capacity	Overall weight	Overall height	Width	Depth	All-Tach <sup>®</sup> Narrow
170 l	180 kg	713 mm	1080 mm	770 mm	N51502388


Mandatory machine equipment: 



**Bucket 4 in 1 (Compact machines) - B4x1 1380 / 270**

Heaped capacity	Overall weight	Overall height	Width	Depth	All-Tach <sup>®</sup> Narrow
270 l	212 kg	713 mm	1380 mm	770 mm	N004046

4 point Carriage	Euro Carriage
N51502391	N51502134

Mandatory machine equipment: 

BUCKETS


**Bucket 4 in 1 with Teeth (Compact machines)**



**Bucket 4 in 1 with Teeth (Compact machines) - B4x1 1380 / 270 T**

Heaped capacity	Overall weight	Overall height	Width	Depth	All-Tach <sup>®</sup> Narrow
270 l	219 kg	713 mm	1380 mm	870 mm	N004070

4 point Carriage	Euro Carriage
N51502394	N51502137

Mandatory machine equipment: 

BUCKETS


**Grapple Bucket (Compact machines)**



**Grapple Bucket (Compact machines) - BG 1200 / 430**

Heaped capacity	Overall weight	Width	Closed grab height	Depth	All-Tach <sup>®</sup> Narrow
430 l	268 kg	1200 mm	840 mm	995 mm	N51502263


4 point Carriage	Euro Carriage
52799522	N51502286

Mandatory machine equipment: 



**Grapple Bucket (Compact machines) - BG 1300 / 470**


Heaped capacity	Overall weight	Overall height	Width	Depth	All-Tach <sup>®</sup> Narrow
470 l	270 kg	840 mm	1300 mm	995 mm	N51502216
<b>4 point Carriage</b>	<b>Euro Carriage</b>				
N51502275	N51502287				

Mandatory machine equipment: 



**Grapple Bucket (Compact machines) - BG 1400 / 510 (a)**

Heaped capacity	Overall weight	Overall height	Width	Depth	All-Tach <sup>®</sup> Narrow
510 l	275 kg	840 mm	1400 mm	995 mm	N51502264
<b>4 point Carriage</b>	<b>Euro Carriage</b>				
N51502276	N51502288				

Mandatory machine equipment: 


BUCKETS

**Light Material Bucket (Compact machines)**



**Light Material Bucket (Compact machines) - BLM 1080 / 510**


Capacity	Heaped capacity	Overall weight	Overall height	Width	Depth
510 kg	510 l	173 kg	775 mm	1080 mm	1025 mm
<b>All-Tach<sup>®</sup> Narrow</b>	<b>4 point Carriage</b>	<b>Euro Carriage</b>			
N004022	N003022	N51502113			

Mandatory machine equipment: 



**Light Material Bucket (Compact machines) - BLM 1200 / 580**

Capacity	Heaped capacity	Overall weight	Overall height	Width	Depth
580 kg	580 l	184 kg	775 mm	1200 mm	1025 mm
<b>All-Tach<sup>®</sup> Narrow</b>	<b>4 point Carriage</b>	<b>Euro Carriage</b>			
N004023	N003023	N51502114			

Mandatory machine equipment: 



**Light Material Bucket (Compact machines) - BLM 1300 / 630 (a)**

Capacity	Heaped capacity	Overall weight	Overall height	Width	Depth
630 kg	630 l	196 kg	775 mm	1300 mm	1025 mm
All-Tach <sup>®</sup> Narrow	4 point Carriage	Euro Carriage			
N004024	N003024	N51502115			

Mandatory machine equipment: ✕



**Light Material Bucket (Compact machines) - BLM 1300 / 630 (b)**

Capacity	Heaped capacity	Overall weight	Overall height	Width	Depth
630 kg	630 l	203 kg	775 mm	1300 mm	988 mm
All-Tach <sup>®</sup>	4 point Carriage	Euro Carriage			
N004088	N003088	N51502160			

Mandatory machine equipment: ✕



**Light Material Bucket (Compact machines) - BLM 1400 / 680 (a)**

Capacity	Heaped capacity	Overall weight	Overall height	Width	Depth
680 kg	680 l	194 kg	775 mm	1400 mm	1025 mm
All-Tach <sup>®</sup> Narrow	4 point Carriage	Euro Carriage			
N004025	N003025	N002025			

Mandatory machine equipment: ✕



**Light Material Bucket (Compact machines) - BLM 1400 / 680 (b)**

Capacity	Heaped capacity	Overall weight	Overall height	Width	Depth
680 kg	680 l	210 kg	775 mm	1400 mm	988 mm
All-Tach <sup>®</sup>	4 point Carriage	Euro Carriage			
N004089	52799520	N51502161			

Mandatory machine equipment: ✕

BUCKETS

**Standard Digging Bucket (Compact machines)**



**Standard Digging Bucket (Compact machines) - BS 1080 / 300**

Heaped capacity	Overall weight	Overall height	Width	Depth	All-Tach <sup>®</sup> Narrow
300 l	126 kg	626 mm	1080 mm	817 mm	N004012
<b>4 point Carriage</b>	<b>Euro Carriage</b>				
N003012	N51502101				

Mandatory machine equipment: ✕



**Standard Digging Bucket (Compact machines) - BS 1150 / 320**

Heaped capacity	Overall weight	Overall height	Width	Depth	All-Tach <sup>®</sup> Narrow
320 l	135 kg	626 mm	1150 mm	817 mm	N004013
<b>4 point Carriage</b>	<b>Euro Carriage</b>				
N003013	N51502102				

Mandatory machine equipment: ✕



**Standard Digging Bucket (Compact machines) - BS 1200 / 340**

Heaped capacity	Overall weight	Overall height	Width	Depth	All-Tach <sup>®</sup> Narrow
340 l	136 kg	626 mm	1200 mm	817 mm	N004014
<b>4 point Carriage</b>	<b>Euro Carriage</b>				
N003014	N51502103				

Mandatory machine equipment: ✕



**Standard Digging Bucket (Compact machines) - BS 1300 / 370**

Heaped capacity	Overall weight	Overall height	Width	Depth	All-Tach <sup>®</sup> Narrow
340 l	145 kg	626 mm	1300 mm	817 mm	N004015
<b>4 point Carriage</b>	<b>Euro Carriage</b>				
N003015	N002015				

Mandatory machine equipment: ✕



**Standard Digging Bucket (Compact machines) - BS 1400 / 400**

Heaped capacity	Overall weight	Overall height	Width	Depth	All-Tach <sup>®</sup> Narrow
400 l	151 kg	626 mm	1400 mm	817 mm	N004016
<b>4 point Carriage</b> N003016	<b>Euro Carriage</b> N002016				

Mandatory machine equipment: ✕



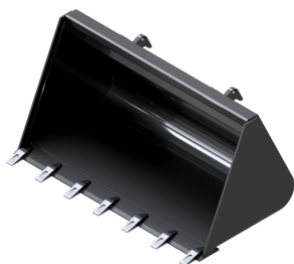
**Standard Digging Bucket (Compact machines) - BS 1400 / 410**

Heaped capacity	Overall weight	Overall height	Width	Depth	All-Tach <sup>®</sup> Narrow
410 l	180 kg	675 mm	1400 mm	760 mm	N004077
<b>4 point Carriage</b> 52807869	<b>Euro Carriage</b> N51502155				

Mandatory machine equipment: ✕

BUCKETS

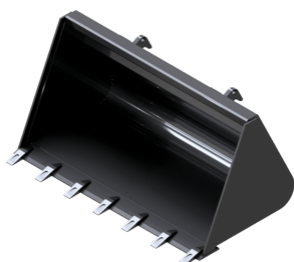
**Standard Digging Bucket with Teeth (Compact machines)**



**Standard Digging Bucket with Teeth (Compact machines) - BS 1080 / 300 T**

Heaped capacity	Overall weight	Overall height	Width	Depth	All-Tach <sup>®</sup> Narrow
300 l	132 kg	626 mm	1080 mm	907 mm	N004054
<b>4 point Carriage</b> N003054	<b>Euro Carriage</b> N51502107				

Mandatory machine equipment: ✕

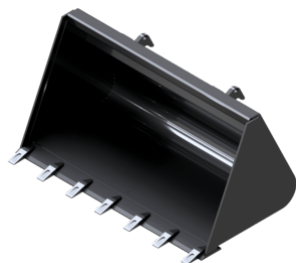


**Standard Digging Bucket with Teeth (Compact machines) - BS 1150 / 320 T**

Heaped capacity	Overall weight	Overall height	Width	Depth	All-Tach <sup>®</sup> Narrow
320 l	142 kg	626 mm	1150 mm	898 mm	N004055
<b>4 point Carriage</b> N003055	<b>Euro Carriage</b> N51502108				

Mandatory machine equipment: ✕

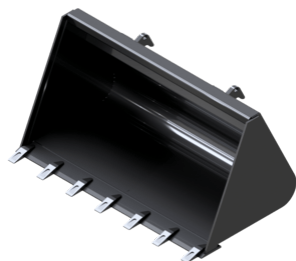




**Standard Digging Bucket with Teeth (Compact machines) - BS 1200 / 340 T**

Heaped capacity	Overall weight	Overall height	Width	Depth	All-TachÂ® Narrow
340 l	142 kg	626 mm	1200 mm	907 mm	N004056
<b>4 point Carriage</b>	<b>Euro Carriage</b>				
N003056	N51502109				

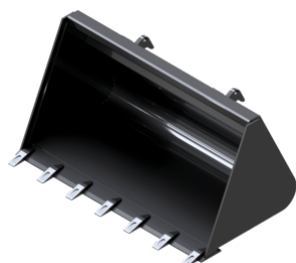
Mandatory machine equipment: ✕



**Standard Digging Bucket with Teeth (Compact machines) - BS 1300 / 370 T**

Heaped capacity	Overall weight	Overall height	Width	Depth	All-TachÂ® Narrow
370 l	151 kg	626 mm	1300 mm	907 mm	N004057
<b>4 point Carriage</b>	<b>Euro Carriage</b>				
N003057	N51502110				

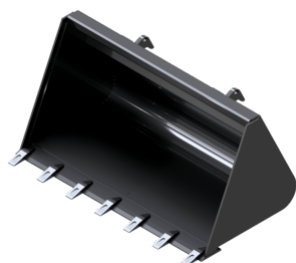
Mandatory machine equipment: ✕



**Standard Digging Bucket with Teeth (Compact machines) - BS 1400 / 400 T**

Heaped capacity	Overall weight	Overall height	Width	Depth	All-TachÂ® Narrow
400 l	158 kg	626 mm	1400 mm	907 mm	N004058
<b>4 point Carriage</b>	<b>Euro Carriage</b>				
N003058	N51502111				

Mandatory machine equipment: ✕



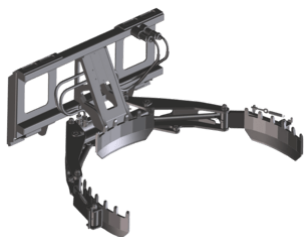
**Standard Digging Bucket with Teeth (Compact machines) - BS 1400 / 410 T**

Heaped capacity	Overall weight	Overall height	Width	Depth	All-TachÂ®
410 l	187 kg	675 mm	1400 mm	822 mm	N004083
<b>4 point Carriage</b>	<b>Euro Carriage</b>				
52799519	N51502158				

Mandatory machine equipment: ✕

CLAMPS

**Pot Clamp (Compact machines)**



**Pot Clamp (Compact machines) - CLP 1000 / 800**

Distance to center of gravity	Capacity	Overall weight	Overall height	Overall length	Width
350 mm	800 kg	109 kg	507 mm	1106 mm	686 mm
Diameter minimum / Diameter maximum	All-Tach <sup>®</sup> Narrow	All-Tach <sup>®</sup>	4 point Carriage	Euro Carriage	
400 mm / 1050 mm	N51502717	N51502716	52742066	52742067	

Mandatory machine equipment:

CLAMPS

**Round Bale Clamp (Compact machines)**



**Round Bale Clamp (Compact machines) - CLBR 2x2 / 800**

Distance to center of gravity	Capacity	Overall weight	Overall height	Overall length	Width
341 mm	800 kg	150 kg	869 mm	910 mm	1090 mm
All-Tach <sup>®</sup> Narrow	All-Tach <sup>®</sup>	4 point Carriage	Euro Carriage		
N51502696	N51502631	N51502632	N51502633		

Mandatory machine equipment:

CLAMPS

**Wrapped Bale Clamp (Compact machines)**



**Wrapped Bale Clamp (Compact machines) - CLBW 800**

Distance to center of gravity	Capacity	Overall weight	Overall height	Overall length	Width
441 mm	800 kg	227 kg	810 mm	1310 mm	1587 mm
Diameter minimum / Diameter maximum	All-Tach <sup>®</sup> Narrow	All-Tach <sup>®</sup>	4 point Carriage	Euro Carriage	
820 mm / 1504 mm	N51502697	N51502013	N51502429	N51502430	

Mandatory machine equipment:

ON FORK HANDLING SOLUTIONS

**Carriage Floating Load Backrest And Forks (MT - MLT)**



**Carriage Floating Load Backrest And Forks (MT - MLT) - CAF 1000 / 1.5 LB**

Distance to center of gravity	Capacity	Overall weight	Overall height	Overall length	Width
168 mm	1500 kg	175 kg	1049 mm	1384 mm	1156 mm
All-Tach <sup>®</sup>	4 point Carriage	Euro Carriage			
52693600	52723634	52723635			

Mandatory machine equipment:

ON FORK HANDLING SOLUTIONS

**Pallet Forks Carriage (Compact machines)**



**Pallet Forks Carriage (Compact machines) - CAT 920 / 1000**

Capacity	Overall height	Forks length	Width	Depth	All-Tach <sup>®</sup> Narrow
1000 kg	893 mm	1000 mm	915 mm	1160 mm	52807868
All-Tach <sup>®</sup> N004019	4 point Carriage 52813313	Euro Carriage 52807866			

Mandatory machine equipment: ✕



**Pallet Forks Carriage (Compact machines) - CAT 920 / 1100**

Capacity	Overall height	Forks length	Width	Depth	All-Tach <sup>®</sup> Narrow
1100 kg	893 mm	1100 mm	915 mm	1260 mm	52807867
4 point Carriage 52796388	Euro Carriage 52799511				

Mandatory machine equipment: ✕



**Pallet Forks Carriage (Compact machines) - CAT 920 / 1200**

Capacity	Overall height	Forks length	Width	Depth	All-Tach <sup>®</sup> Narrow
1200 kg	893 mm	1200 mm	915 mm	1360 mm	52799512
4 point Carriage 52799521					

Mandatory machine equipment: ✕



**Pallet Forks Carriage (Compact machines) - CAT 1210 / 1200 (b)**

Capacity	Overall height	Forks length	Width	Depth	All-Tach <sup>®</sup>
1200 kg	890 mm	1200 mm	1212 mm	1350 mm	52799516
4 point Carriage 52799513	Euro Carriage 52799514				

Mandatory machine equipment: ✕

FORKS & GRABS

**Bale Forks (Compact machines)**



**Bale Forks (Compact machines) - FB 950 / 700**

Capacity	Overall weight	Overall height	Overall length	Forks length	Width
700 kg	73 kg	610 mm	850 mm	670 mm	1150 mm
Depth	All-Tach <sup>®</sup> Narrow	All-Tach <sup>®</sup>	4 point Carriage	Euro Carriage	
820 mm	N51502699	N51502684	N51502685	N51502686	

Mandatory machine equipment: ✕



**Bale Forks (Compact machines) - FB 950 / 700 LB**

Distance to center of gravity	Capacity	Overall weight	Overall height	Overall length	Forks length
155 mm	700 kg	72 kg	1061 mm	1230 mm	950 mm
Width	Depth	All-Tach <sup>®</sup> Narrow	All-Tach <sup>®</sup>	4 point Carriage	Euro Carriage
1127 mm	1230 mm	N51502698	N51502687	N51502688	N51502689

Mandatory machine equipment: ✕

FORKS & GRABS

**Manure Fork (Compact machines)**



**Manure Fork (Compact machines) - FM 1200 (a)**

Overall weight	Overall height	Width	Depth	All-Tach <sup>®</sup> Narrow	4 point Carriage
109 kg	694 mm	1200 mm	843 mm	52799526	52799531
Euro Carriage					
52807871					

Mandatory machine equipment: ✕

FORKS & GRABS

**Manure Fork With Grapple (Compact machines)**



**Manure Fork With Grapple (Compact machines) - FMG 1100 / 320**

Heaped capacity	Overall weight	Overall height	Width	Depth	Euro Carriage
290 l	145 kg	746 mm	1100 mm	848 mm	52807870

Mandatory machine equipment:



**Manure Fork With Grapple (Compact machines) - FMG 1200 / 320 (a)**

Heaped capacity	Overall weight	Overall height	Width	Depth	All-Tach <sup>®</sup> Narrow
320 l	144 kg	746 mm	1200 mm	904 mm	52799524
4 point Carriage	Euro Carriage				
52796387	52799523				

Mandatory machine equipment:

JIBS

**Frame Mounted Hook**



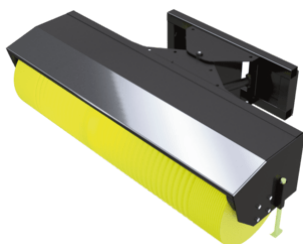
**Frame Mounted Hook - JH 2500**

Distance to center of gravity	Capacity	Max. outreach	Overall weight	Overall height	Overall length
229 mm	2500 kg	506 mm	85 kg	605 mm	654 mm
Width	All-Tach <sup>®</sup>	4 point Carriage	Euro Carriage		
696 mm	52579090	52742070	52742071		

Mandatory machine equipment:

SWEEPER & CLEANER

**Angle Broom (Compact machines)**



**Angle Broom (Compact machines) - SCA 1330**

Overall weight	Overall height	Width	Depth	All-Tach <sup>®</sup> Narrow	4 point Carriage
360 kg	684 mm	1448 mm	1331 mm	N004039	N51502376
Euro Carriage					
N51502380					

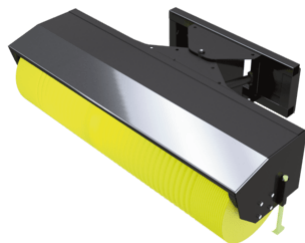
Mandatory machine equipment:



**Angle Broom (Compact machines) - SCA 1530**


Overall weight	Overall height	Width	Depth	All-Tach <sup>®</sup> Narrow	All-Tach <sup>®</sup>
400 kg	684 mm	1753 mm	1331 mm	N004040	N004041
4 point Carriage	Euro Carriage				
N51502377	N51502381				

Mandatory machine equipment:



**Angle Broom (Compact machines) - SCA 1680**

Overall weight	Overall height	Width	Depth	All-Tach <sup>®</sup>	4 point Carriage
410 kg	684 mm	1908 mm	1331 mm	N004042	N51502378
<b>Euro Carriage</b>					
N51502382					

Mandatory machine equipment: 


SWEEPER & CLEANER

**Broom Bucket (Compact machines)**



**Broom Bucket (Compact machines) - SCB 1380**


Overall weight	Overall height	Width	Depth	All-Tach <sup>®</sup> Narrow
310 kg	652 mm	1631 mm	1222 mm	N004037

Mandatory machine equipment: 



**Broom Bucket (Compact machines) - SCB 1525 (a)**

Overall weight	Overall height	Width	Depth	All-Tach <sup>®</sup>
346 kg	652 mm	1776 mm	1222 mm	N004038

Mandatory machine equipment: 



SNOW REMOVING SOLUTIONS

**Snow blade (Compact machines)**



**Snow blade (Compact machines) - BLS 1500**

Overall weight	Overall height	Width	Depth	All-Tach <sup>®</sup> Narrow	4 point Carriage
220 kg	700 mm	1500 mm	900 mm	N51502219	N51502217
<b>Euro Carriage</b>					
N51502218					

Mandatory machine equipment:  + 



**Snow blade (Compact machines) - BLS 1800**

Overall weight	Overall height	Width	Depth	All-TachÂ®	4 point Carriage
280 kg	700 mm	1800 mm	900 mm	N51502224	N51502222
<b>Euro Carriage</b>					
N51502223					

Mandatory machine equipment: +

LEVELLING SOLUTIONS

**Dozer Blade (Compact machines)**



**Dozer Blade (Compact machines) - BLD 1525**

Overall weight	Overall height	Width	Depth	All-TachÂ®	4 point Carriage
240 kg	677 mm	1525 mm	813 mm	N700396	N750996
<b>Euro Carriage</b>					
N51502207					

Mandatory machine equipment:

MISCELLANEOUS ATTACHMENTS

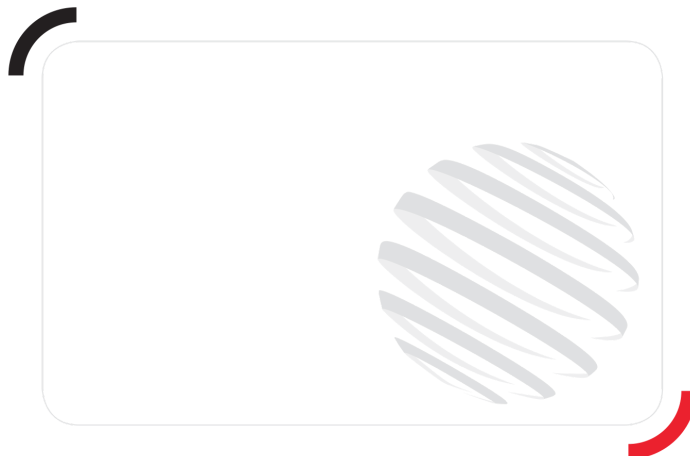
**Auger (Compact machines)**



**Auger (Compact machines) - A 110 H**

Overall weight	Width	All-TachÂ®	4 point Carriage	Euro Carriage
110 kg	352 mm	52728005	52741078	52741077

Mandatory machine equipment:



**Head Office**

B.P. 249 - 430 rue de l'Aubinière  
44150 Ancenis Cedex - France

Tel: +33 (0)2 40 09 10 11 - Fax: +33 (0)2 40 09 10 97

[www.manitou.com](http://www.manitou.com)



This publication provides a description of the configuration versions and options for Manitou products, which may differ for equipment. The equipment presented in this brochure may be part of a series, as an option, or it may not be available, depending on the versions. Manitou reserves the right, at any time and without notice, to amend the specifications described and represented. The specifications provided do not bind the manufacturer. For more details, please contact your Manitou agent. This is not a contractually binding document. The presentation of the products is not contractually binding. List of specifications non-exhaustive.

The logos as well as the visual identity of the company are owned by Manitou and cannot be used without authorisation. All rights reserved. The photos and diagrams contained in this brochure are only provided for consultation and information purposes.

MANITOU BF SA - Limited company with board of directors - Share capital: 39,668,399 euros - 857 802 508 RCS Nantes