

English

Articulated loaders

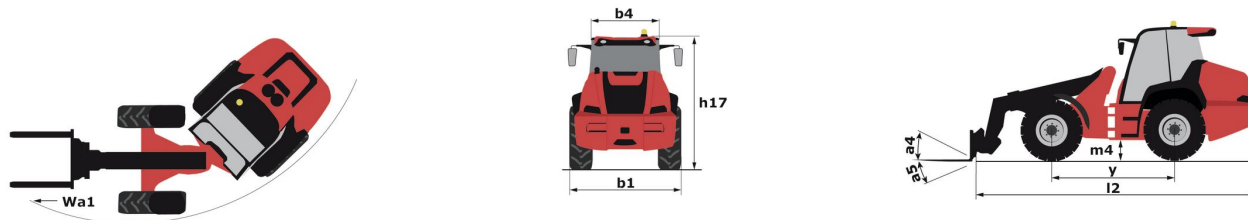
MLA/MLA-T

MLA-T 516-75 H

MACHINEBOOK

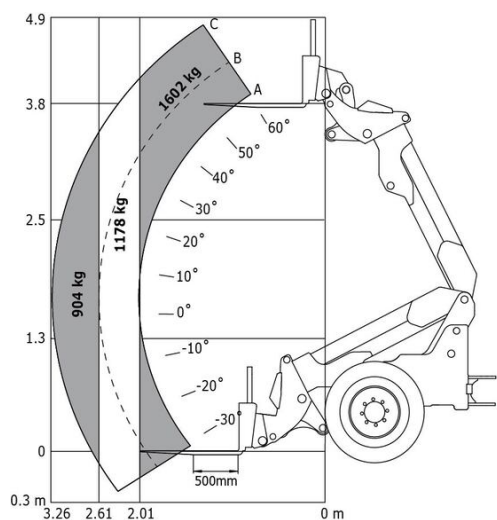


Capacities		Metric
Static tipping load with bucket (straight)		3535 kg
Static tipping load with forks (straight)		2732 kg
Static tipping load with forks (full turn)		2000 kg
Max. payload with forks as per EN 474-3 (80%)		1600 kg
Max. height of bucket pivot point	h35	5.03 m
Max. lifting height (below forks)	h3	4.84 m
Max. outreach		3.30 m
Weight and dimensions		
Unladen weight (with forks) with 4-post canopy		5543 kg
Overall width of 4 posts canopy	b22	1.28 m
Overall cab width	b4	1.28 m
Overall height with 4 posts canopy	h38	2.48 m
Articulation angle	a19	44 °
Overall width less bucket	b1	1.74 m
Overall length - Less Bucket	l2	4.95 m
Ground clearance	m4	0.31 m
Engine		
Engine brand		Deutz
Engine model		TD 3.6 L4
Engine norm		Stage V, Tier 4
Number of cylinders / Capacity of cylinders		4 - 3600 cm ³
I.C. Engine power rating / Power		74.30 Hp / 55.40 kW
Max. torque / Engine rotation		330 Nm / 1600 rpm
Engine cooling system		2 radiators water + hydraulic oil
Transmission		
Transmission type		Hydrostatic
Number of gears (forward / reverse)		2 / 2
Max. travel speed (may vary according to applicable regulations)		30 km/h
Travel speed (laden)		20 km/h
Differential lock		Front and rear locking of the machine
Parking brake		Manual
Hydraulics		
Hydraulic pump type		Gear pump
Hydraulic flow - Pressure		70 l/min / 200 bar
High-Flow Option (l/min)		110 l/min
Drive hydraulic system pressure		380 bar
Tank capacities		
Hydraulic oil		74 l
Fuel tank		102 l
Noise and vibration		
Vibration on hands/arms		< 2.50 m/s ²
Miscellaneous		
Safety cab homologation		ROPS - FOPS cab (level 1)



MLA-T 516-75 H - LOAD CHART

Machine on tires with forks - Load chart compliant with EN 474-3
(80%) Metric



BUCKETS

Light Material Bucket (Compact machines)



Light Material Bucket (Compact machines) - BLM 1650 / 1100

Capacity	Heaped capacity	Overall weight	Overall height	Width	Depth
810 kg	810 l	1100 kg	810 mm	1650 mm	1224 mm
All-Tach [®]	4 point Carriage	Euro Carriage			
N51502537	N51502603	N51502562			

Mandatory machine equipment: ✕



Light Material Bucket (Compact machines) - BLM 1800 / 1200

Capacity	Heaped capacity	Overall weight	Overall height	Width	Depth
810 kg	810 l	1200 kg	810 mm	1800 mm	1224 mm
All-Tach [®]	4 point Carriage	Euro Carriage			
N51502536	N51502605	N51502564			

Mandatory machine equipment: ✕



Light Material Bucket (Compact machines) - BLM 1950 / 1300

Capacity	Heaped capacity	Overall weight	Overall height	Width	Depth
1300 kg	1300 l	354 kg	810 mm	1950 mm	1224 mm
All-Tach [®]	4 point Carriage	Euro Carriage			
N51502535	N51502607	N51502566			

Mandatory machine equipment: ✕



Light Material Bucket (Compact machines) - BLM 2150 / 1420

Capacity	Heaped capacity	Overall weight	Overall height	Width	Depth
1420 kg	1420 l	380 kg	810 mm	2150 mm	1224 mm
All-Tach [®]	4 point Carriage	Euro Carriage			
N51502534	N51502609	N51502568			

Mandatory machine equipment: ✕

BUCKETS

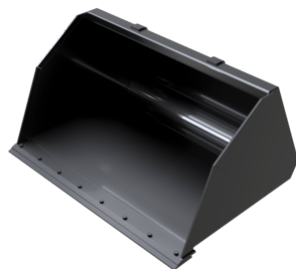
Light Material Bucket with Wear Plate (Compact machines)



Light Material Bucket with Wear Plate (Compact machines) - BLM WP 1650 / 1100

Capacity	Heaped capacity	Overall weight	Overall height	Width	Depth
1100 kg	1100 l	342 kg	810 mm	1650 mm	1271 mm
All-Tach [®]	4 point Carriage	Euro Carriage			
N51502533	N51502604	N51502563			

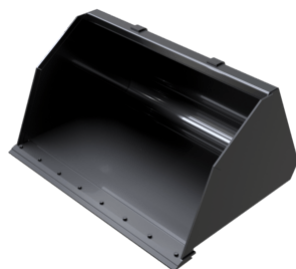
Mandatory machine equipment: ✕



Light Material Bucket with Wear Plate (Compact machines) - BLM WP 1800 / 1200

Capacity	Heaped capacity	Overall weight	Overall height	Width	Depth
1200 kg	1200 l	365 kg	810 mm	1800 mm	1271 mm
All-Tach [®]	4 point Carriage	Euro Carriage			
N51502532	N51502606	N51502565			

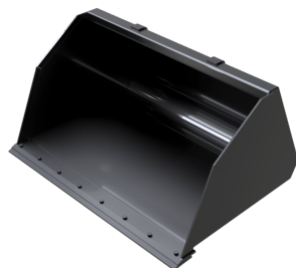
Mandatory machine equipment: ✕



Light Material Bucket with Wear Plate (Compact machines) - BLM WP 1950 / 1300

Capacity	Heaped capacity	Overall weight	Overall height	Width	Depth
1300 kg	1300 l	387 kg	810 mm	1950 mm	1271 mm
All-Tach [®]	4 point Carriage	Euro Carriage			
N51502531	N51502608	N51502567			

Mandatory machine equipment: ✕



Light Material Bucket with Wear Plate (Compact machines) - BLM WP 2150 / 1420

Capacity	Heaped capacity	Overall weight	Overall height	Width	Depth
1420 kg	1420 l	417 kg	810 mm	2150 mm	1271 mm
All-Tach [®]	4 point Carriage	Euro Carriage			
N51502530	N51502610	N51502569			

Mandatory machine equipment: ✕

BUCKETS

Standard Digging Bucket (Compact machines)



Standard Digging Bucket (Compact machines) - BS 1650 / 730

Heaped capacity	Overall weight	Overall height	Width	Depth	All-Tach ^Å ®
730 l	265 kg	730 mm	1650 mm	1024 mm	N51502506
4 point Carriage	Euro Carriage				
N51502611	N51502570				

Mandatory machine equipment: ✕



Standard Digging Bucket (Compact machines) - BS 1800 / 800

Heaped capacity	Overall weight	Overall height	Width	Depth	All-Tach ^Å ®
800 l	285 kg	730 mm	1800 mm	1024 mm	N51502505
4 point Carriage	Euro Carriage				
N51502614	N51502573				

Mandatory machine equipment: ✕



Standard Digging Bucket (Compact machines) - BS 1950 / 860

Heaped capacity	Overall weight	Overall height	Width	Depth	All-Tach ^Å ®
870 l	300 kg	730 mm	1950 mm	1024 mm	N51502547
4 point Carriage	Euro Carriage				
N51502617	N51502576				

Mandatory machine equipment: ✕



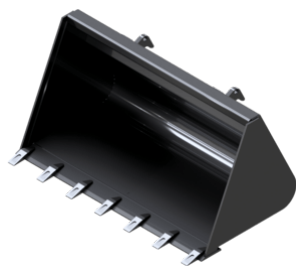
Standard Digging Bucket (Compact machines) - BS 2150 / 950

Heaped capacity	Overall weight	Overall height	Width	Depth	All-Tach ^Å ®
960 l	333 kg	730 mm	2150 mm	1024 mm	N51502546
4 point Carriage	Euro Carriage				
N51502620	N51502579				

Mandatory machine equipment: ✕

BUCKETS

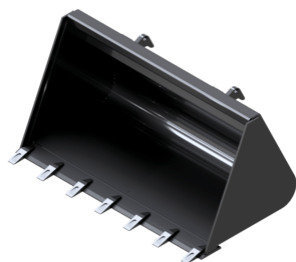
Standard Digging Bucket with Teeth (Compact machines)



Standard Digging Bucket with Teeth (Compact machines) - BS 1650 / 730 T

Heaped capacity	Overall weight	Overall height	Width	Depth	All-TachÄ®
730 l	273 kg	730 mm	1650 mm	1124 mm	N51502541
4 point Carriage	Euro Carriage				
N51502612	N51502571				

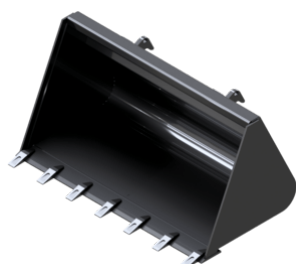
Mandatory machine equipment: ✕



Standard Digging Bucket with Teeth (Compact machines) - BS 1800 / 800 T

Heaped capacity	Overall weight	Overall height	Width	Depth	All-TachÄ®
800 l	294 kg	730 mm	1800 mm	1124 mm	N51502540
4 point Carriage	Euro Carriage				
N51502615	N51502574				

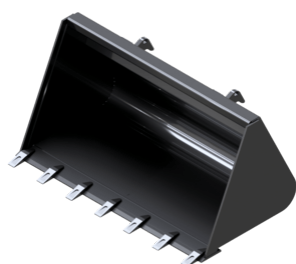
Mandatory machine equipment: ✕



Standard Digging Bucket with Teeth (Compact machines) - BS 1950 / 860 T

Heaped capacity	Overall weight	Overall height	Width	Depth	All-TachÄ®
870 l	309 kg	730 mm	1950 mm	1124 mm	N51502539
4 point Carriage	Euro Carriage				
N51502619	N51502578				

Mandatory machine equipment: ✕



Standard Digging Bucket with Teeth (Compact machines) - BS 2150 / 950 T

Heaped capacity	Overall weight	Overall height	Width	Depth	All-TachÄ®
960 l	344 kg	730 mm	2150 mm	1124 mm	N51502538
4 point Carriage	Euro Carriage				
N51502621	N51502580				

Mandatory machine equipment: ✕

BUCKETS

Standard Digging Bucket with Wear Plate (Compact machines)



Standard Digging Bucket with Wear Plate (Compact machines) - BS WP 1650 / 730

Heaped capacity	Overall weight	Overall height	Width	Depth	All-TachÂ®
730 l	302 kg	730 mm	1650 mm	1171 mm	N51502545
4 point Carriage	Euro Carriage				
N51502613	N51502572				

Mandatory machine equipment: ✕



Standard Digging Bucket with Wear Plate (Compact machines) - BS WP 1800 / 800

Heaped capacity	Overall weight	Overall height	Width	Depth	All-TachÂ®
800 l	325 kg	730 mm	1800 mm	1171 mm	N51502544
4 point Carriage	Euro Carriage				
N51502616	N51502575				

Mandatory machine equipment: ✕



Standard Digging Bucket with Wear Plate (Compact machines) - BS WP 1950 / 860

Heaped capacity	Overall weight	Overall height	Width	Depth	All-TachÂ®
870 l	343 kg	730 mm	1950 mm	1171 mm	N51502543
4 point Carriage	Euro Carriage				
N51502618	N51502577				

Mandatory machine equipment: ✕



Standard Digging Bucket with Wear Plate (Compact machines) - BS WP 2150 / 950

Heaped capacity	Overall weight	Overall height	Width	Depth	All-TachÂ®
960 l	381 kg	730 mm	2150 mm	1171 mm	N51502542
4 point Carriage	Euro Carriage				
N51502622	N51502581				

Mandatory machine equipment: ✕


CLAMPS

Round Bale Clamp (Compact machines)



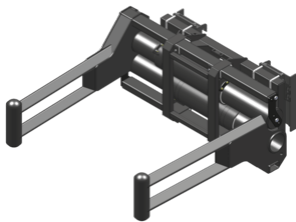
Round Bale Clamp (Compact machines) - CLBR 2x2 / 800

Distance to center of gravity	Capacity	Overall weight	Overall height	Overall length	Width
341 mm	800 kg	150 kg	869 mm	910 mm	1090 mm
All-Tach [®] Narrow	All-Tach [®]	4 point Carriage	Euro Carriage		
N51502696	N51502631	N51502632	N51502633		

Mandatory machine equipment: 


CLAMPS

Square wrapped bale clamp (Compact machines)



Square wrapped bale clamp (Compact machines) - CLBSW 2000 / 1000

Capacity	Overall weight	Overall height	Arm length	All-Tach [®]	4 point Carriage
1000 kg	477 kg	679 mm	1811 mm	N51502694	N51502693
Euro Carriage					
N51502692					

Mandatory machine equipment: 


FORKS & GRABS

Bale Forks (Compact machines)



Bale Forks (Compact machines) - FB 950 / 700


Capacity	Overall weight	Overall height	Overall length	Forks length	Width
700 kg	73 kg	610 mm	850 mm	670 mm	1150 mm
Depth	All-Tach [®] Narrow	All-Tach [®]	4 point Carriage	Euro Carriage	
820 mm	N51502699	N51502684	N51502685	N51502686	

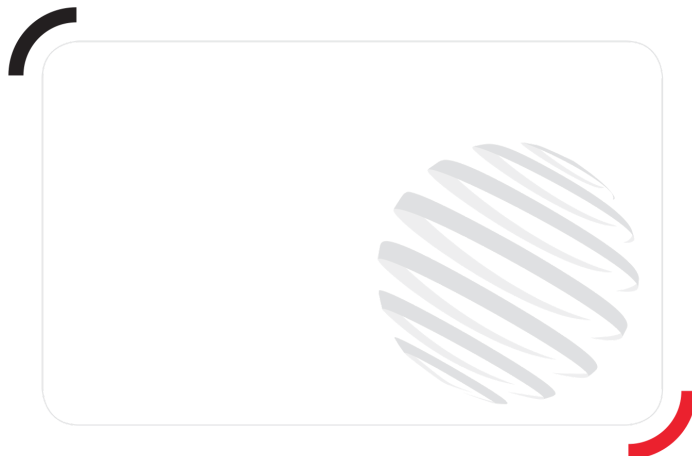
Mandatory machine equipment: 



Bale Forks (Compact machines) - FB 950 / 700 LB

Distance to center of gravity	Capacity	Overall weight	Overall height	Overall length	Forks length
155 mm	700 kg	72 kg	1061 mm	1230 mm	950 mm
Width	Depth	All-Tach [®] Narrow	All-Tach [®]	4 point Carriage	Euro Carriage
1127 mm	1230 mm	N51502698	N51502687	N51502688	N51502689

Mandatory machine equipment: 



Head Office

B.P. 249 - 430 rue de l'Aubinière
44150 Ancenis Cedex - France

Tel: +33 (0)2 40 09 10 11 - Fax: +33 (0)2 40 09 10 97

www.manitou.com



This publication provides a description of the configuration versions and options for Manitou products, which may differ for equipment. The equipment presented in this brochure may be part of a series, as an option, or it may not be available, depending on the versions. Manitou reserves the right, at any time and without notice, to amend the specifications described and represented. The specifications provided do not bind the manufacturer. For more details, please contact your Manitou agent. This is not a contractually binding document. The presentation of the products is not contractually binding. List of specifications non-exhaustive.

The logos as well as the visual identity of the company are owned by Manitou and cannot be used without authorisation. All rights reserved. The photos and diagrams contained in this brochure are only provided for consultation and information purposes.

MANITOU BF SA - Limited company with board of directors - Share capital: 39,668,399 euros - 857 802 508 RCS Nantes