

English

Articulated loaders

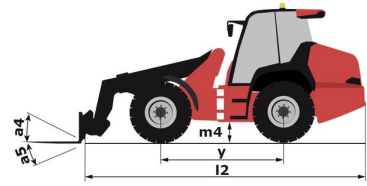
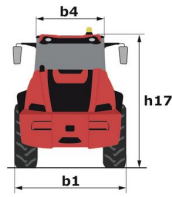
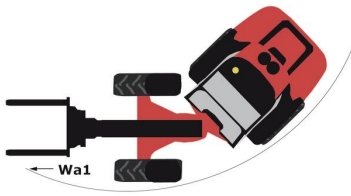
MLA/MLA-T

# **MLA 6-65 H-Z**

## **MACHINEBOOK**



Capacities		Metric
Static tipping load with bucket (straight)		2907 kg
Static tipping load with bucket (full turn)		2230 kg
Static tipping load with forks (straight)		2259 kg
Static tipping load with forks (full turn)		1778 kg
Max. height of bucket pivot point	h35	3.32 m
Max. lifting height (below forks)	h3	3.13 m
Breakout force with bucket		5743 daN
Weight and dimensions		
Unladen weight (with forks) with 4-post canopy		4150 kg
Unladen weight (with forks)		4309 kg
Wheelbase	y	2.01 m
Overall width of 4 posts canopy	b22	1.28 m
Overall cab width	b4	1.28 m
Overall height with FOPS removed and ROPS folded	h36	1.98 m
Overall height with 4 posts canopy	h38	2.47 m
Overall height with cab	h17	2.47 m
Tilt-up angle	a4	45 °
Tilt-down angle	a5	45 °
Articulation angle	a19	45 °
Overall width less bucket	b1	1.65 m
Overall length - Less Bucket	l2	4.26 m
Ground clearance	m4	0.37 m
Engine		
Engine brand		Yanmar
Engine model		4TNV98CT_PGWL1
Engine norm		Stage IIIB
Number of cylinders / Capacity of cylinders		4 - 3300 cm <sup>3</sup>
I.C. Engine power rating / Power		65 Hp / 48.50 kW
Max. torque / Engine rotation		280 Nm / 1560 rpm
Engine cooling system		2 radiators water + hydraulic oil
Transmission		
Transmission type		Hydrostatic
Number of gears (forward / reverse)		2 / 2
Max. travel speed (may vary according to applicable regulations)		30 km/h
Travel speed (laden)		20 km/h
Differential lock		Front and rear locking of the machine
Parking brake		Manual
Hydraulics		
Hydraulic pump type		Gear pump
Hydraulic flow - Pressure		70 l/min / 200 bar
High-Flow Option (l/min)		100 l/min
Drive hydraulic system pressure		420 bar
Tank capacities		
Hydraulic oil		74 l
Fuel tank		95 l
Noise and vibration		
Vibration on hands/arms		< 2.50 m/s <sup>2</sup>
Miscellaneous		
Safety cab homologation		ROPS - FOPS cab (level 1)



BUCKETS

**Bucket 4 in 1 (Compact machines)**



**Bucket 4 in 1 (Compact machines) - B4x1 1650 / 610**

Heaped capacity	Overall weight	Overall height	Width	Depth	All-Tach <sup>Å</sup> ®
610 l	470 kg	863 mm	1650 mm	833 mm	N51502529
4 point Carriage	Euro Carriage				
N51502589	N51502548				

Mandatory machine equipment:



**Bucket 4 in 1 (Compact machines) - B4x1 1800 / 670**

Heaped capacity	Overall weight	Overall height	Width	Depth	All-Tach <sup>Å</sup> ®
670 l	500 kg	863 mm	1800 mm	833 mm	N51502528
4 point Carriage	Euro Carriage				
N51502591	N51502550				

Mandatory machine equipment:



**Bucket 4 in 1 (Compact machines) - B4x1 1950 / 720**

Heaped capacity	Overall weight	Overall height	Width	Depth	All-Tach <sup>Å</sup> ®
720 l	525 kg	863 mm	1950 mm	833 mm	N51502527
4 point Carriage	Euro Carriage				
N51502593	N51502552				

Mandatory machine equipment:



**Bucket 4 in 1 (Compact machines) - B4x1 2150 / 800**

Heaped capacity	Overall weight	Overall height	Width	Depth	All-Tach <sup>Å</sup> ®
820 l	565 kg	863 mm	2150 mm	833 mm	N51502526
4 point Carriage	Euro Carriage				
N51502595	N51502554				

Mandatory machine equipment:

BUCKETS

**Bucket 4 in 1 with Teeth (Compact machines)**



**Bucket 4 in 1 with Teeth (Compact machines) - B4x1 1650 / 610 T**

Heaped capacity	Overall weight	Overall height	Width	Depth	All-Tach <sup>®</sup>
610 l	482 kg	863 mm	1650 mm	933 mm	N51502525
<b>4 point Carriage</b>	<b>Euro Carriage</b>				
N51502590	N51502549				

Mandatory machine equipment:



**Bucket 4 in 1 with Teeth (Compact machines) - B4x1 1800 / 670 T**

Heaped capacity	Overall weight	Overall height	Width	Depth	All-Tach <sup>®</sup>
670 l	514 kg	863 mm	1800 mm	933 mm	N51502524
<b>4 point Carriage</b>	<b>Euro Carriage</b>				
N51502592	N51502551				

Mandatory machine equipment:



**Bucket 4 in 1 with Teeth (Compact machines) - B4x1 1950 / 720 T**

Heaped capacity	Overall weight	Overall height	Width	Depth	All-Tach <sup>®</sup>
720 l	540 kg	863 mm	1950 mm	933 mm	N51502523
<b>4 point Carriage</b>	<b>Euro Carriage</b>				
N51502594	N51502553				

Mandatory machine equipment:

BUCKETS

**Grapple Bucket (Compact machines)**



**Grapple Bucket (Compact machines) - BG 1200 / 430**


Heaped capacity	Overall weight	Width	Closed grab height	Depth	All-Tach <sup>®</sup> Narrow
430 l	268 kg	1200 mm	840 mm	995 mm	N51502263
<b>4 point Carriage</b>	<b>Euro Carriage</b>				
52799522	N51502286				

Mandatory machine equipment:



### Grapple Bucket (Compact machines) - BG 1650 FO

Heaped capacity	Overall weight	Width	Closed grab height	Depth	All-TachÂ®
660 l	355 kg	1650 mm	850 mm	958 mm	N51502521
<b>4 point Carriage</b>	<b>Euro Carriage</b>				
N51502598	N51502557				

Mandatory machine equipment: 



### Grapple Bucket (Compact machines) - BG 1950 FO

Heaped capacity	Overall weight	Width	Closed grab height	Depth	All-TachÂ®
780 l	400 kg	1950 mm	850 mm	958 mm	N51502520
<b>4 point Carriage</b>	<b>Euro Carriage</b>				
N51502600	N51502559				

Mandatory machine equipment: 

## BUCKETS

### High Tip Bucket (Compact machines)



#### High Tip Bucket (Compact machines) - BHS 1525 / 550

Capacity	Heaped capacity	Overall weight	Overall height	Width	Depth
990 kg	550 l	340 kg	643 mm	1525 mm	970 mm
<b>All-TachÂ®</b>					
N004050					

Mandatory machine equipment: 

## BUCKETS

### Light Material Bucket (Compact machines)



#### Light Material Bucket (Compact machines) - BLM 1650 / 1100

Capacity	Heaped capacity	Overall weight	Overall height	Width	Depth
810 kg	810 l	1100 kg	810 mm	1650 mm	1224 mm
<b>All-TachÂ®</b>	<b>4 point Carriage</b>	<b>Euro Carriage</b>			
N51502537	N51502603	N51502562			

Mandatory machine equipment: 



**Light Material Bucket (Compact machines) - BLM 1800 / 1200**

Capacity	Heaped capacity	Overall weight	Overall height	Width	Depth
810 kg	810 l	1200 kg	810 mm	1800 mm	1224 mm
All-Tach <sup>®</sup>	4 point Carriage	Euro Carriage			
N51502536	N51502605	N51502564			

Mandatory machine equipment: ✕



**Light Material Bucket (Compact machines) - BLM 1950 / 1300**

Capacity	Heaped capacity	Overall weight	Overall height	Width	Depth
1300 kg	1300 l	354 kg	810 mm	1950 mm	1224 mm
All-Tach <sup>®</sup>	4 point Carriage	Euro Carriage			
N51502535	N51502607	N51502566			

Mandatory machine equipment: ✕

BUCKETS

**Light Material Bucket with Wear Plate (Compact machines)**



**Light Material Bucket with Wear Plate (Compact machines) - BLM WP 1650 / 1100**

Capacity	Heaped capacity	Overall weight	Overall height	Width	Depth
1100 kg	1100 l	342 kg	810 mm	1650 mm	1271 mm
All-Tach <sup>®</sup>	4 point Carriage	Euro Carriage			
N51502533	N51502604	N51502563			

Mandatory machine equipment: ✕



**Light Material Bucket with Wear Plate (Compact machines) - BLM WP 1800 / 1200**

Capacity	Heaped capacity	Overall weight	Overall height	Width	Depth
1200 kg	1200 l	365 kg	810 mm	1800 mm	1271 mm
All-Tach <sup>®</sup>	4 point Carriage	Euro Carriage			
N51502532	N51502606	N51502565			

Mandatory machine equipment: ✕



**Light Material Bucket with Wear Plate (Compact machines) - BLM WP 1950 / 1300**

Capacity	Heaped capacity	Overall weight	Overall height	Width	Depth
1300 kg	1300 l	387 kg	810 mm	1950 mm	1271 mm
All-Tach <sup>Å</sup> ®	4 point Carriage	Euro Carriage			
N51502531	N51502608	N51502567			

Mandatory machine equipment: ✕

BUCKETS

**Standard Digging Bucket (Compact machines)**



**Standard Digging Bucket (Compact machines) - BS 1650 / 730**

Heaped capacity	Overall weight	Overall height	Width	Depth	All-Tach <sup>Å</sup> ®
730 l	265 kg	730 mm	1650 mm	1024 mm	N51502506
4 point Carriage	Euro Carriage				
N51502611	N51502570				

Mandatory machine equipment: ✕



**Standard Digging Bucket (Compact machines) - BS 1800 / 800**

Heaped capacity	Overall weight	Overall height	Width	Depth	All-Tach <sup>Å</sup> ®
800 l	285 kg	730 mm	1800 mm	1024 mm	N51502505
4 point Carriage	Euro Carriage				
N51502614	N51502573				

Mandatory machine equipment: ✕



**Standard Digging Bucket (Compact machines) - BS 1950 / 860**

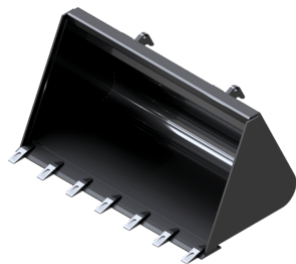
Heaped capacity	Overall weight	Overall height	Width	Depth	All-Tach <sup>Å</sup> ®
870 l	300 kg	730 mm	1950 mm	1024 mm	N51502547
4 point Carriage	Euro Carriage				
N51502617	N51502576				

Mandatory machine equipment: ✕



BUCKETS

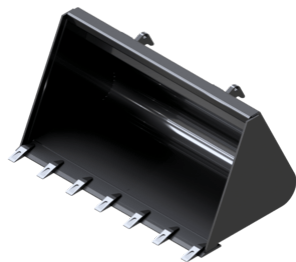
**Standard Digging Bucket with Teeth (Compact machines)**



**Standard Digging Bucket with Teeth (Compact machines) - BS 1650 / 730 T**

Heaped capacity	Overall weight	Overall height	Width	Depth	All-TachÄ®
730 l	273 kg	730 mm	1650 mm	1124 mm	N51502541
<b>4 point Carriage</b>	<b>Euro Carriage</b>				
N51502612	N51502571				

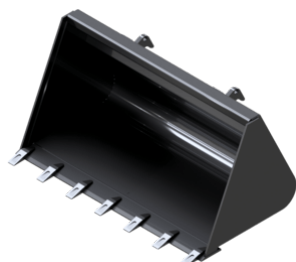
Mandatory machine equipment: ✕



**Standard Digging Bucket with Teeth (Compact machines) - BS 1800 / 800 T**

Heaped capacity	Overall weight	Overall height	Width	Depth	All-TachÄ®
800 l	294 kg	730 mm	1800 mm	1124 mm	N51502540
<b>4 point Carriage</b>	<b>Euro Carriage</b>				
N51502615	N51502574				

Mandatory machine equipment: ✕



**Standard Digging Bucket with Teeth (Compact machines) - BS 1950 / 860 T**

Heaped capacity	Overall weight	Overall height	Width	Depth	All-TachÄ®
870 l	309 kg	730 mm	1950 mm	1124 mm	N51502539
<b>4 point Carriage</b>	<b>Euro Carriage</b>				
N51502619	N51502578				

Mandatory machine equipment: ✕

BUCKETS

**Standard Digging Bucket with Wear Plate (Compact machines)**



**Standard Digging Bucket with Wear Plate (Compact machines) - BS WP 1650 / 730**

Heaped capacity	Overall weight	Overall height	Width	Depth	All-TachÄ®
730 l	302 kg	730 mm	1650 mm	1171 mm	N51502545
<b>4 point Carriage</b>	<b>Euro Carriage</b>				
N51502613	N51502572				

Mandatory machine equipment: ✕



**Standard Digging Bucket with Wear Plate (Compact machines) - BS WP 1800 / 800**

Heaped capacity	Overall weight	Overall height	Width	Depth	All-Tach <sup>®</sup>
800 l	325 kg	730 mm	1800 mm	1171 mm	N51502544
<b>4 point Carriage</b>	<b>Euro Carriage</b>				
N51502616	N51502575				

Mandatory machine equipment: ✕



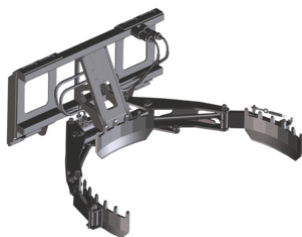
**Standard Digging Bucket with Wear Plate (Compact machines) - BS WP 1950 / 860**

Heaped capacity	Overall weight	Overall height	Width	Depth	All-Tach <sup>®</sup>
870 l	343 kg	730 mm	1950 mm	1171 mm	N51502543
<b>4 point Carriage</b>	<b>Euro Carriage</b>				
N51502618	N51502577				

Mandatory machine equipment: ✕

CLAMPS

**Pot Clamp (Compact machines)**



**Pot Clamp (Compact machines) - CLP 1000 / 800**

Distance to center of gravity	Capacity	Overall weight	Overall height	Overall length	Width
350 mm	800 kg	109 kg	507 mm	1106 mm	686 mm
<b>Diameter minimum / Diameter maximum</b>	<b>All-Tach<sup>®</sup> Narrow</b>	<b>All-Tach<sup>®</sup></b>	<b>4 point Carriage</b>	<b>Euro Carriage</b>	
400 mm / 1050 mm	N51502717	N51502716	52742066	52742067	

Mandatory machine equipment:

CLAMPS

**Round Bale Clamp (Compact machines)**



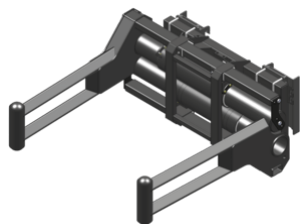
**Round Bale Clamp (Compact machines) - CLBR 2x2 / 800**

Distance to center of gravity	Capacity	Overall weight	Overall height	Overall length	Width
341 mm	800 kg	150 kg	869 mm	910 mm	1090 mm
<b>All-Tach<sup>®</sup> Narrow</b>	<b>All-Tach<sup>®</sup></b>	<b>4 point Carriage</b>	<b>Euro Carriage</b>		
N51502696	N51502631	N51502632	N51502633		

Mandatory machine equipment:

CLAMPS

Square wrapped bale clamp (Compact machines)



Square wrapped bale clamp (Compact machines) - CLBSW 2000 / 1000

Capacity	Overall weight	Overall height	Arm length	All-Tach <sup>®</sup>	4 point Carriage
1000 kg	477 kg	679 mm	1811 mm	N51502694	N51502693
<b>Euro Carriage</b>					
N51502692					

Mandatory machine equipment:

ON FORK HANDLING SOLUTIONS

Pallet Forks Carriage (Compact machines)



Pallet Forks Carriage (Compact machines) - CAT 1200 / 1200

Capacity	Overall height	Forks length	Width	Depth
1200 kg	888 mm	1200 mm	1212 mm	1488 mm

Mandatory machine equipment: ✗

FORKS & GRABS

Bale Forks (Compact machines)



Bale Forks (Compact machines) - FB 950 / 700

Capacity	Overall weight	Overall height	Overall length	Forks length	Width
700 kg	73 kg	610 mm	850 mm	670 mm	1150 mm
<b>Depth</b>	<b>All-Tach<sup>®</sup> Narrow</b>	<b>All-Tach<sup>®</sup></b>	<b>4 point Carriage</b>	<b>Euro Carriage</b>	
820 mm	N51502699	N51502684	N51502685	N51502686	

Mandatory machine equipment: ✗



Bale Forks (Compact machines) - FB 950 / 700 LB

Distance to center of gravity	Capacity	Overall weight	Overall height	Overall length	Forks length
155 mm	700 kg	72 kg	1061 mm	1230 mm	950 mm
<b>Width</b>	<b>Depth</b>	<b>All-Tach<sup>®</sup> Narrow</b>	<b>All-Tach<sup>®</sup></b>	<b>4 point Carriage</b>	<b>Euro Carriage</b>
1127 mm	1230 mm	N51502698	N51502687	N51502688	N51502689

Mandatory machine equipment: ✗

FORKS & GRABS

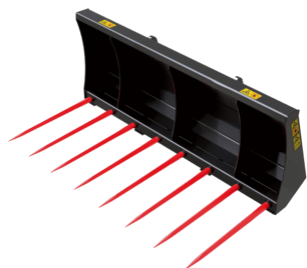
**Manure Fork (Compact machines)**



**Manure Fork (Compact machines) - FM 1200 (b)**

Overall weight	Overall height	Width	Depth	Euro Carriage
109 kg	694 mm	1200 mm	843 mm	N51502173

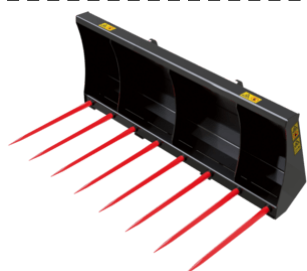
Mandatory machine equipment: ✕



**Manure Fork (Compact machines) - FM 1650**

Overall weight	Overall height	Width	Depth	All-TachÅ®	4 point Carriage
183 kg	704 mm	1650 mm	1032 mm	N51502515	N51502624
<b>Euro Carriage</b>					
N51502583					

Mandatory machine equipment: ✕



**Manure Fork (Compact machines) - FM 1950**

Overall weight	Overall height	Width	Depth	All-TachÅ®	4 point Carriage
216 kg	704 mm	1950 mm	1032 mm	N51502514	N51502625
<b>Euro Carriage</b>					
N51502584					

Mandatory machine equipment: ✕

FORKS & GRABS

**Manure Fork With Grapple (Compact machines)**



**Manure Fork With Grapple (Compact machines) - FMG 1650**

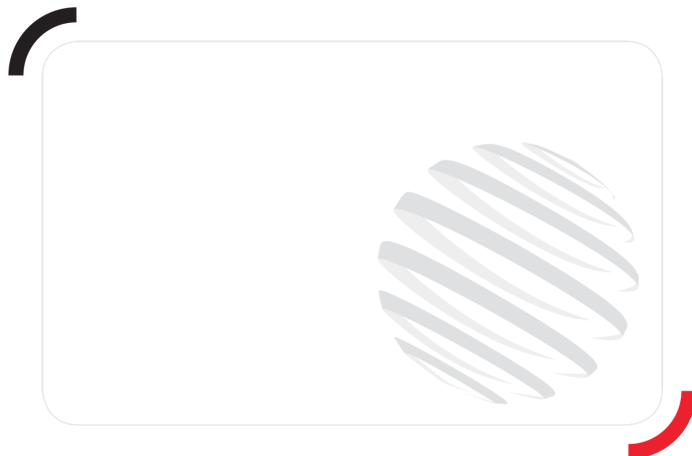
Heaped capacity	Overall weight	Overall height	Width	Depth	All-TachÅ®
660 l	300 kg	851 mm	1650 mm	1032 mm	N51502512
<b>4 point Carriage</b>	<b>Euro Carriage</b>				
N51502627	N51502586				

Mandatory machine equipment: ☐☐

**Manure Fork With Grapple (Compact machines) - FMG 1950**

Heaped capacity	Overall weight	Overall height	Width	Depth	All-TachÂ®
780 l	345 kg	851 mm	1950 mm	1032 mm	N51502511
4 point Carriage	Euro Carriage				
N51502628	N51502587				

Mandatory machine equipment: 



**Head Office**

B.P. 249 - 430 rue de l'Aubinière  
44150 Ancenis Cedex - France

Tel: +33 (0)2 40 09 10 11 - Fax: +33 (0)2 40 09 10 97

[www.manitou.com](http://www.manitou.com)



This publication provides a description of the configuration versions and options for Manitou products, which may differ for equipment. The equipment presented in this brochure may be part of a series, as an option, or it may not be available, depending on the versions. Manitou reserves the right, at any time and without notice, to amend the specifications described and represented. The specifications provided do not bind the manufacturer. For more details, please contact your Manitou agent. This is not a contractually binding document. The presentation of the products is not contractually binding. List of specifications non-exhaustive.

The logos as well as the visual identity of the company are owned by Manitou and cannot be used without authorisation. All rights reserved. The photos and diagrams contained in this brochure are only provided for consultation and information purposes.

MANITOU BF SA - Limited company with board of directors - Share capital: 39,668,399 euros - 857 802 508 RCS Nantes