



**STRONG PARTNERS.  
TOUGH TRUCKS.™**

**FORTENS™**



## **LPG FORKLIFT TRUCKS**

**S2.0-3.5FT FORTENS ADVANCE / FORTENS ADVANCE+**



**2000-3500 KG**

# FORTENS ADVANCE S2.0FT, S2.5FT, S3.0FT, S3.5FT

DISTINGUISHING MARK	HYSTER			
	S2.0FT	S2.5FT	S3.0FT	S3.5FT
	1.1 Manufacturer (abbreviation)	Fortens Advance	Fortens Advance	Fortens Advance
1.2 Manufacturer's type designation	Fortens Advance	Fortens Advance	Fortens Advance	Fortens Advance
Model	Fortens Advance	Fortens Advance	Fortens Advance	Fortens Advance
Engine / transmission	PSI 2.4L DuraMatch™ 1 Speed	PSI 2.4L DuraMatch™ 1 Speed	PSI 2.4L DuraMatch™ 1 Speed	PSI 2.4L DuraMatch™ 1 Speed
Brake type	ADS Drum Brakes	ADS Drum Brakes	ADS Drum Brakes	ADS Drum Brakes
1.3 Drive: electric (battery or mains), diesel, petrol, fuel gas	LPG	LPG	LPG	LPG
1.4 Operator type: hand, pedestrian, standing, seated, order-picker	Seated	Seated	Seated	Seated
1.5 Rated capacity/rated load	2.0	2.5	3.0	3.5
1.6 Load centre distance	500	500	500	500
1.8 Load distance, centre of drive axle to fork	390	390	402	402
1.9 Wheelbase	1430	1430	1430	1430
WEIGHTS	3555			
	4682	688	5371	807
	1618	1937	1542	2369
1595	2868	1501	3309	
TYRES/CHASSIS	V			
	21 x 8 - 15	21 x 8 - 15	21 x 8 - 15	21 x 9 - 15
	16 x 6 - 10.5	16 x 6 - 10.5	16 x 6 - 10.5	16 x 6 - 10.5
3.5 Number of wheels, front/rear (X = driven)	2x 2	2x 2	2x 2	2x 2
3.6 Tread, front	929	929	929	929
3.7 Tread, rear	914	914	914	914
DIMENSIONS	5			
	2135	2135	2185	2185
	100	100	100	100
4.4 Lift	3250	3250	3155	3155
4.5 Height of mast, extended +	3845	3845	3850	3850
4.7 Height of overhead guard (cabin) ■	2128	2128	2128	2128
4.8 Seat height relating to SIP/stand height ○	1024	1024	1024	1024
4.12 Coupling height	300	300	300	300
4.19 Overall length	3226	3280	3356	3406
4.20 Length to face of forks	2226	2280	2356	2406
4.21 Overall width ▢	1070	1242	1108	1242
4.22 Fork dimensions DIN ISO 2331	40 x 100 x 1000	40 x 100 x 1000	50 x 125 x 1000	50 x 125 x 1000
4.23 Fork carriage ISO 2328, class/type A, B	II A	II A	III A	III A
4.24 Fork carriage width ●	980	980	980	980
4.31 Ground clearance, laden, below mast	89	89	89	89
4.32 Ground clearance, centre of wheelbase	125	125	125	125
4.34.1 Aisle width for pallets 1000 x 1200 crossways	3540	3590	3668	3721
4.34.2 Aisle width for pallets 800 x 1200 lengthways	3740	3790	3868	3921
4.35 Turning radius	1950	2000	2066	2119
4.36 Internal turning radius	586	586	586	586
4.41 90° intersecting aisle (with pallet W = 1200mm, L = 1000mm)	1839	1863	1914	1959
4.42 Step height (from ground to running board)	350	350	350	350
4.43 Step height (between intermediate steps between running board and floor)	295	295	295	295
PERFORMANCE DATA	17.6			
	0.61	0.63	0.61	0.63
	0.58	0.50	0.58	0.51
5.5 Drawbar pull, laden/unladen †	19820	7850	19660	7440
5.7 Gradeability, laden/unladen ††	26.3	24.4	22.5	20.8
5.9 Acceleration time, laden/unladen	5.1	4.4	5.3	4.5
5.10 Service brake	Hydraulic	Hydraulic	Hydraulic	Hydraulic
COMBUSTION ENGINE	PSI 2.4L			
	44.0	44.0	44.0	44.0
	2700	2700	2700	2700
7.4 Number of cylinders/displacement	4	2351	4	2351
7.5 Fuel consumption according to VDI cycle †††	2.6	2.8	3.0	3.2
7.10 Battery voltage/nominal capacity	12	65	12	65
ADDITIONAL DATA	Automatic			
	0 - 155	0 - 155	0 - 155	0 - 155
	62	62	62	62
10.3 Hydraulic oil tank, capacity	36.1	36.1	36.1	36.1
10.7 Sound pressure level at the driver's seat ◇	77	77	77	77
10.7.2 Guaranteed sound power 2000/14/EC	101	101	101	101
10.8 Towing coupling type	Pin	Pin	Pin	Pin

Specification data is based on VDI 2198.

### EQUIPMENT AND WEIGHT:

Weights (line 2.1) are based on the following specifications: Complete truck with 3 290mm (S2.0-2.5FT) / 3 205mm (S3.0-3.5FT) 2-stage limited free lift mast, standard carriage, 1 000mm forks, e-hydraulics, overhead guard and standard cushion drive and steer tyres.

# FORTENS ADVANCE+ S2.0FT, S2.5FT, S3.0FT, S3.5FT

DISTINGUISHING MARK	HYSTER			
	S2.0FT	S2.5FT	S3.0FT	S3.5FT
	1.1 Manufacturer (abbreviation)	Fortens Advance+	Fortens Advance+	Fortens Advance+
1.2 Manufacturer's type designation	Fortens Advance+	Fortens Advance+	Fortens Advance+	Fortens Advance+
Model	Fortens Advance+	Fortens Advance+	Fortens Advance+	Fortens Advance+
Engine / transmission	Kubota 2.5L DuraMatch™ 1 Speed	Kubota 2.5L DuraMatch™ 1 Speed	Kubota 2.5L DuraMatch™ 1 Speed	Kubota 2.5L DuraMatch™ 1 Speed
Brake type	ADS Drum Brakes	ADS Drum Brakes	ADS Drum Brakes	ADS Drum Brakes
1.3 Drive: electric (battery or mains), diesel, petrol, fuel gas	LPG	LPG	LPG	LPG
1.4 Operator type: hand, pedestrian, standing, seated, order-picker	Seated	Seated	Seated	Seated
1.5 Rated capacity/rated load	2.0	2.5	3.0	3.5
1.6 Load centre distance	500	500	500	500
1.8 Load distance, centre of drive axle to fork	390	390	402	402
1.9 Wheelbase	1430	1430	1430	1430
WEIGHTS	3555			
	4682	688	5371	807
	1618	1937	1542	2369
1595	2868	1501	3309	
TYRES/CHASSIS	V			
	21 x 8 - 15	21 x 8 - 15	21 x 8 - 15	21 x 9 - 15
	16 x 6 - 10.5	16 x 6 - 10.5	16 x 6 - 10.5	16 x 6 - 10.5
3.5 Number of wheels, front/rear (X = driven)	2x 2	2x 2	2x 2	2x 2
3.6 Tread, front	929	929	929	929
3.7 Tread, rear	914	914	914	914
DIMENSIONS	5			
	2135	2135	2185	2185
	100	100	100	100
4.4 Lift	3250	3250	3155	3155
4.5 Height of mast, extended +	3845	3845	3850	3850
4.7 Height of overhead guard (cabin) ■	2128	2128	2128	2128
4.8 Seat height relating to SIP/stand height ○	1024	1024	1024	1024
4.12 Coupling height	300	300	300	300
4.19 Overall length	3226	3280	3356	3406
4.20 Length to face of forks	2226	2280	2356	2406
4.21 Overall width ▢	1070	1242	1108	1242
4.22 Fork dimensions DIN ISO 2331	40 x 100 x 1000	40 x 100 x 1000	50 x 125 x 1000	50 x 125 x 1000
4.23 Fork carriage ISO 2328, class/type A, B	II A	II A	III A	III A
4.24 Fork carriage width ●	980	980	980	980
4.31 Ground clearance, laden, below mast	89	89	89	89
4.32 Ground clearance, centre of wheelbase	125	125	125	125
4.34.1 Aisle width for pallets 1000 x 1200 crossways	3540	3590	3668	3721
4.34.2 Aisle width for pallets 800 x 1200 lengthways	3740	3790	3868	3921
4.35 Turning radius	1950	2000	2066	2119
4.36 Internal turning radius	586	586	586	586
4.41 90° intersecting aisle (with pallet W = 1200mm, L = 1000mm)	1839	1863	1914	1959
4.42 Step height (from ground to running board)	350	350	350	350
4.43 Step height (between intermediate steps between running board and floor)	295	295	295	295
PERFORMANCE DATA	17.8			
	0.62	0.64	0.62	0.64
	0.58	0.50	0.58	0.51
5.5 Drawbar pull, laden/unladen †	18010	8820	17853	8820
5.7 Gradeability, laden/unladen ††	25.4	24.4	21.7	20.8
5.9 Acceleration time, laden/unladen	4.5	4.1	4.7	4.1
5.10 Service brake	Hydraulic	Hydraulic	Hydraulic	Hydraulic
COMBUSTION ENGINE	Kubota 2.5L			
	43.9	43.9	43.9	43.9
	2500	2500	2500	2500
7.4 Number of cylinders/displacement	4	2491	4	2491
7.5 Fuel consumption according to VDI cycle †††	2.7	3.0	3.2	3.4
7.10 Battery voltage/nominal capacity	12	65	12	65
ADDITIONAL DATA	Automatic			
	0 - 155	0 - 155	0 - 155	0 - 155
	66	66	66	66
10.3 Hydraulic oil tank, capacity	36.1	36.1	36.1	36.1
10.7 Sound pressure level at the driver's seat ◇	78	78	78	78
10.7.2 Guaranteed sound power 2000/14/EC	101	101	101	101
10.8 Towing coupling type	Pin	Pin	Pin	Pin

Specification data is based on VDI 2198.

### EQUIPMENT AND WEIGHT:

Weights (line 2.1) are based on the following specifications: Complete truck with 3 290mm (S2.0-2.5FT) / 3 205mm (S3.0-3.5FT) 2-stage limited free lift mast, standard carriage, 1 000mm forks, e-hydraulics, overhead guard and standard cushion drive and steer tyres.

## MAST AND CAPACITY INFORMATION

### S2.0-2.5FT MASTS

	Maximum fork height (mm)	Back tilt	Overall lowered height (mm)	Overall Extended height (mm)	Free lift (top of forks) (mm)
2-stage Limited Free Lift	3290 4830	5° 5°	2135 2985	4515 ❖ 6055 ❖	140 ▽ 140 ▽
2-stage Full Free Lift	3300	5°	2135	4525 ❖	1575 ▽
3-stage Full Free Lift	4950	5°	2135	6170 ❖	1595 ▽
	5550	5°	2385	6770 ❖	1655 ▽
	6000	5°	2585	7220 ❖	2045 ▽

### S3.0-3.5FT MASTS

	Maximum fork height (mm)	Back tilt	Overall lowered height (mm)	Overall Extended height (mm)	Free lift (top of forks) (mm)
2-stage Limited Free Lift	3205	5°	2185	4435 ❖	150 ▽
2-stage Full Free Lift	3310	5°	2235	435 ❖	1590 ▽
3-stage Full Free Lift	4765	5°	2235	5995 ❖	1605 ▽
	4915	5°	2285	6145 ❖	1655 ▽
	5965	5°	2735	7195 ❖	2015 ▽

### S2.0-3.5FT - Capacity Chart in kg @ 500mm Load Centre

	Maximum fork height (mm)	Cushion Tyres									
		Without sideshift		With ISS & FP		Maximum fork height (mm)	Without sideshift		With ISS & FP		
		S2.0FT	S2.5FT	S2.0FT	S2.5FT		S3.0FT	S3.5FT	S3.0FT	S3.5FT	
2-stage Limited Free Lift	3290	2000	2500	2000	2500	3205	3000	3360	2990	3310	
	4830	1920	2410	1910	2400		3705	3000	3310	2970	3270
2-stage Full Free Lift	3300	2000	2500	2000	2500	3310	3000	3310	2980	3310	
3-stage Full Free Lift	4950	1900	2390	1890	2370	4765	2890	3380	2840	3330	
	5550	1800	2270	1770	2240		4915	2860	3350 ◀	2810	3300 ◀
	6000	1710	2180 ◀	1680	2140		5965	2110 ◀	1870 ◀	2160 ◀	1910 ◀

### S2.0-3.5FT - Capacity Chart in kg @ 600mm Load Centre

	Maximum fork height (mm)	Cushion Tyres									
		Without sideshift		With ISS & FP		Maximum fork height (mm)	Without sideshift		With ISS & FP		
		S2.0FT	S2.5FT	S2.0FT	S2.5FT		S3.0FT	S3.5FT	S3.0FT	S3.5FT	
2-stage Limited Free Lift	3290	1900	2350	1820	2260	3205	2820	3280	2700	3140	
	4830	1800	2250	1720	2160		3705	2810	3270	2680	3120
2-stage Full Free Lift	3300	1890	2350	1810	2250	3310	2810	3280	2690	3140	
3-stage Full Free Lift	4950	1780	2220	1700	2130	4765	2680	3140	2560	3000	
	5550	1670	2100	1600	2020		4915	2650	3110 ◀	2530	2980 ◀
	6000	1580	2010	1510	1930		5965	2110 ◀	1870 ◀	2160 ◀	1910 ◀

### NOTES

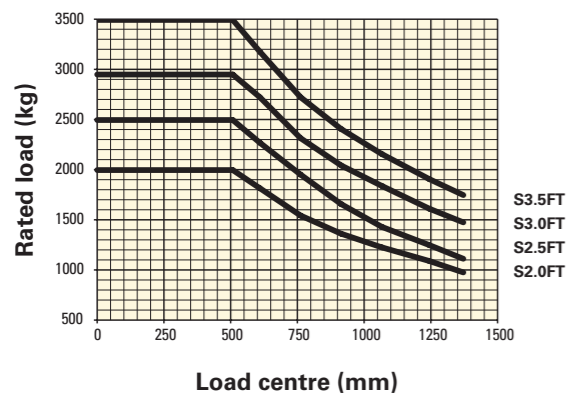
To calculate truck capacities with alternative truck specifications to the ones shown in the above tables, please consult your Hyster dealer.

The rated capacities shown are for masts in a vertical position on trucks equipped with standard or sideshift carriage, and nominal length forks. Masts above the maximum fork heights shown in the mast table are classified as high lift, and depending on the tyre/tread configuration may require reduced capacity, restricted back tilt or wide tread.

Values shown are for standard equipment. When using non-standard equipment, these values may change. Please contact your Hyster dealer for information.

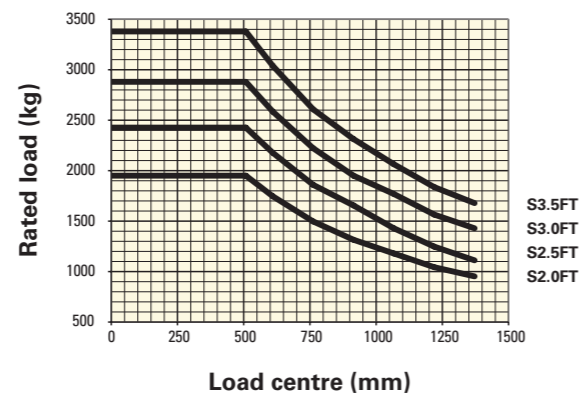
## RATED CAPACITIES

### STANDARD CARRIAGE



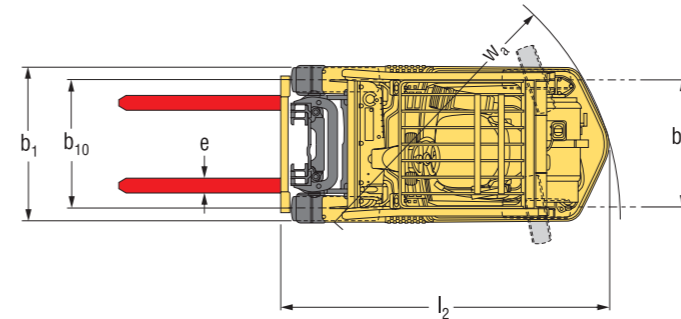
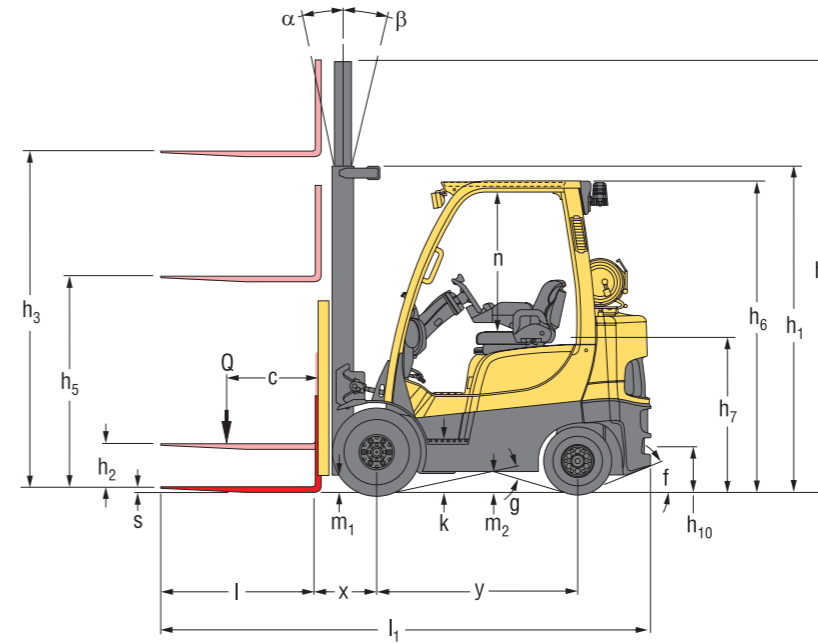
**Load centre**  
Distance from front of forks to centre of gravity of load.

### INTEGRAL SIDESHIFT AND FORK POSITIONING CARRIAGE



**Rated load**  
Based on vertical masts up to 4 350 mm (S2.0-2.5FT) and 4 170 mm (S3.0-3.5FT).

## TRUCK DIMENSIONS



= Centre of gravity of unladen truck

$$Ast = W_a + x + l_g + a \text{ (see lines 4.34.1 \& 4.34.2)}$$

a = Minimum operating clearance

(VDI standard = 200 mm BITA recommendation = 300 mm)

$l_g$  = Load length

### NOTE:

Specifications are affected by the condition of the vehicle and how it is equipped, as well as the nature and condition of the operating area. Inform your dealer of the nature and condition of the intended operating area when purchasing your Hyster Truck.

▣ Standard/Wide

▮ Bottom of forks

○ Full suspension seat in depressed position

❖ Without load backrest

● Add 31 mm with load backrest

■  $h_6$  subject to +/- 5 mm tolerance

\* at 1.6km/h

\*\* at 4.8km/h

◇ Variable

◇ Measured according to the test cycles and based on the weighting values contained in EN12053

◆ Stacking aisle width (lines 4.34.1 & 4.34.2) are based on the V.D.I. standard calculation as shown on illustration. The British Industrial Truck Association recommends the addition of 100 mm to the total clearance (dimension a) for extra operating margin at the rear of the truck.

† Gradeability figures (lines 5.7 & 5.8) are provided for comparison of tractive performance, but are not intended to endorse the operation of the vehicle on the stated inclines. Follow instructions in the operating manual regarding operation on inclines.

### MAST TABLES:

❖ With load backrest

▽ Without load backrest

◀ Wide tread required

### NOTICE:

Care must be exercised when handling elevated loads. When the carriage and/or load is elevated, truck stability is reduced. It is important that the mast tilt in either direction is kept to a minimum when loads are elevated.

Operators must be trained and must read, understand and follow the instructions contained in the Operating Manual.

All values are nominal values and they are subject to tolerances. For further information, please contact the manufacturer.

Hyster products are subject to change without notice.

Lift trucks illustrated may feature optional equipment. Values may vary with alternative configurations.

### CE Safety:

This truck conforms to the current EU requirements.

## DIMENSIONS

Dimensions (mm)	S2.0FT	S2.5FT	S3.0FT	S3.5FT
f	50	45	39	39
g	33.3	33.3	33.3	33.3
k	350	350	350	350
n	1067	1067	1067	1067

## PRODUCT PACKAGES

The Hyster Fortens™ range has been designed to match the vast range of application requirements and business objectives that customers demand.

The S2.0-3.5FT Series is available in several truck packages, with multiple powertrain combinations to choose from, to best match operational demands. Each configuration offers improved efficiency, advanced dependability, lower cost of ownership and simple serviceability.

Model / Bundle	S2.0FT			S2.5FT		
LPG	Engine	Transmission	Brakes	Engine	Transmission	Brakes
Fortens Advance	PSI 2.4L	DuraMatch™ 1 speed	ADS Drum	PSI 2.4L	DuraMatch™ 1 speed	ADS Drum
Fortens Advance+	Kubota 2.5L	DuraMatch™ 1 speed	ADS Drum	Kubota 2.5L	DuraMatch™ 1 speed	ADS Drum

Model / Bundle	S3.0FT			S3.5FT		
LPG	Engine	Transmission	Brakes	Engine	Transmission	Brakes
Fortens Advance	PSI 2.4L	DuraMatch™ 1 speed	ADS Drum	PSI 2.4L	DuraMatch™ 1 speed	ADS Drum
Fortens Advance+	Kubota 2.5L	DuraMatch™ 1 speed	ADS Drum	Kubota 2.5L	DuraMatch™ 1 speed	ADS Drum

Please refer to the Price List for full option configurations.

## PRODUCT FEATURES

### THIS SERIES OF TRUCKS IS AVAILABLE IN TWO CONFIGURATIONS.

The Fortens™ Advance truck provides excellent performance for standard and medium-duty applications, optimised for lowest hourly operation cost.

The Fortens™ Advance+ truck delivers maximum performance for medium to heavy-duty applications with state-of-the-art features and industry leading power.

Designed to support specialised applications with optional traction speed limiter, impact sensor and power-train protection, plus options supporting use of attachments including hydraulic accumulator and memory tilt.

### MASTS

The Fortens™ trucks are equipped with new mast which provides excellent visibility both through the mast and all around. They are manufactured without compromise to provide robust and reliable performance, with minimal maintenance cost over the lifetime of the product. The mast has a robust design and offers excellent rigidity particularly at full lift height.

### ENGINES

The Fortens™ trucks are powered by a range of heavy duty industrial engines, designed to deliver power efficiently over a 20,000 hour design life with 500 hour service intervals. All engines feature Cast Iron Blocks and a 5 main bearing design; engines are fully isolated from the frame and axle to prevent direct transmission of noise and vibration, resulting in low vehicle noise and vibration levels.

Variations in LPG fuel and its higher burning temperatures present challenges for converted Gasoline Engines and Hyster has developed state of the art electronic fuel injection systems, which use closed loop control to maintain proper fuelling in all operating conditions. These advanced Industrial Engines feature coil over plug spark designs, and especially hardened intake and exhaust valve seats to ensure long operating life.

The new PSI 2.4L LPG engine is designed with fuel economy and low cost of ownership in mind. With cast iron cylinder block and cylinder head manufactured from aluminium it has 5 main bearings.

The high performance Kubota 2.5L LPG engine maximises performance and productivity for intensive operations, and with Cast Iron head and special 9.5 Litre Oil capacity is designed to do so reliably for the life of the truck. Advanced engine controls allow fuel mapping to be optimised to allow highly efficient operation in ECO-eLo mode, with minimum loss of performance.

All stainless steel exhaust system and intake valve seat inserts are used to provide long valve and seat life with LPG fuel.

The full pressure lubrication system has a spin-on, full flow oil filter with a relief valve to ensure engine lubrication even if the filter becomes clogged. Latest technology LPG fuel system allows offering new engine modes. Password protected under a supervisor password, 3 engine modes allows the performance of the truck to be set to match application needs with minimum fuel usage.

## PRODUCT FEATURES

### TRANSMISSIONS

The Fortens™ Advance & Fortens™ Advance+ models are available with the electronically controlled **DuraMatch™ transmission**, providing:

- **Auto Deceleration System (ADS)** automatically slows the truck when the accelerator pedal is released, and finally brings the truck to a stop, which helps to significantly extend brake life. In addition, this feature assists the driver to accurately position the truck in front of a load. There are 10 ADS settings, programmable via the dash display by a service technician, which deliver different braking characteristics, from very gradual to aggressive, to suit the needs of the application.

- **Controlled Power Reversal**; the Pacesetter VSM™ controls the transmission to deliver smooth direction changes. The VSM reduces the throttle to slow the engine, initiates auto-deceleration to stop the truck, changes the transmission direction automatically and increases the throttle to accelerate the truck. The system virtually eliminates tyre spin and shock loads on the transmission and significantly increases tyre life.

As with ADS, the system is programmable via the dash display by a service technician, with settings from 1 to 10, to suit the needs of the application.

- **Controlled Roll-Back on Ramp**; the transmission controls the rate of decent of the truck on a ramp, when the brake and throttle pedal are released, to provide maximum control on a grade and increase operator productivity.

The transmission is compatible with 2 available aluminium core radiators and a superior counterweight tunnel design coupled with a "pusher" type fan, to provide the industry's best cooling.

All powertrains are controlled, protected and managed by the **Pacesetter™ VSM** industrial onboard computer featuring a CANbus communications network.

This system permits adjustment and optimisation of the truck's performance, in addition to monitoring key functions. It enables quick, easy diagnostics, minimizing repair downtime and unnecessary parts swapping.

Hassle-Free Hydraulic systems, featuring Leak-free Oring face seal fittings reduce leaks for enhanced reliability.

Non-mechanical, Hall-Effect sensors and switches have been fitted and are designed to outlast the life of the truck.

Load Sensing Hydraulics (LSH) deliver increased operational efficiency, providing a 15% reduction in fuel consumption on the VDI cycle, with no loss in productivity\*. Variable displacement piston pumps match the flow rate and lifting speed continuously to the demands of the duty cycle. The engine therefore supplies only power to the hydraulic pumps when required, so more power is available for driving. This provides increased responsiveness and acceleration, which increases productivity and lowers fuel consumption, reducing overall operating costs.

With LSH Hyster also offers an ECO-eLo (Fuel Efficiency) mode, reducing engine speed by 20% and optimising throttle response, so that the truck operates in the most economical power range. This results in a reduction in fuel consumption of a further 5%\*, but has a limited effect on overall truck productivity under application conditions. The ECO-eLo mode also delivers lower noise levels by up to 3dB(A). If a faster work rate, or higher productivity is required, the truck can easily be reprogrammed to HiP (High Performance) mode of operation through the dash display, with access secured by a unique customer password.

(\*Hyster Productivity Test Cycle: Load Sensing Hydraulics is available on trucks with TouchPoint mini-levers. The ECO-eLo function is only available on trucks with DuraMatch™ transmissions).

The operator compartment features class-leading **Ergonomics** for maximum driver comfort and productivity.

- Operator space is optimised, thanks to a new overhead guard design and significantly more floor space.
- The Easy-to-use 3-point entry design of the operator compartment has an open non-slip step with a height of just 35cm.
- The Full Suspension Seat together with the isolated powertrain provide best in class Whole-Body Vibration levels of 0.6m/s<sup>2</sup>, ensuring that the operator remains comfortable throughout the shift and fatigue, aches and pains are kept to a minimum.
- The armrest that accompanies the TouchPoint™ E-hydraulic configurations moves with the seat and telescopes forward and is adjustable for height and reach.
- The rear grab handle with horn button facilitates reverse driving.
- An infinitely adjustable steering column, 30cm diameter steering wheel with spinner knob and full-suspension seat enhance driver comfort.
- Optional swing out and drop down LPG tank bracket.

The Hyster Fortens™ is the fastest and easiest lift truck to **Service**.

- Complete cowl-to-counterweight service access and simplified layout of wiring and hydraulics offers greater access to components, which in turn decreases service time for unscheduled repairs and regular maintenance.
- Fast, colour-coded daily checks and diagnostic systems can be managed via the dash display.
- An Engine coolant change and Hydraulic oil change interval of 4 000 hours also contributes to reduced downtime.

# STRONG PARTNERS. TOUGH TRUCKS.™

FOR DEMANDING OPERATIONS, EVERYWHERE.

Hyster supplies a complete range of warehouse equipment, IC and electric counterbalanced trucks, container handlers and reach stackers. Hyster is committed to being much more than a lift truck supplier.

Our aim is to offer a complete partnership capable of responding to the full spectrum of material handling issues: Whether you need professional consultancy on your fleet management, fully qualified service support, or reliable parts supply, you can depend on Hyster.

Our network of highly trained dealers provides expert, responsive local support. They can offer cost-effective finance packages and introduce effectively managed maintenance programmes to ensure that you get the best possible value. Our business is dealing with your material handling needs so you can focus on the success of your business today and in the future.



## HYSTER EUROPE

Centennial House, Frimley Business Park, Frimley, Surrey, GU16 7SG, England.

Tel: +44 (0) 1276 538500



[www.hyster.eu](http://www.hyster.eu)



[infoeurope@hyster.com](mailto:infoeurope@hyster.com)



[/HysterEurope](https://www.facebook.com/HysterEurope)




[@HysterEurope](https://twitter.com/HysterEurope)




[/HysterEurope](https://www.youtube.com/HysterEurope)



HYSTER-YALE UK LIMITED trading as Hyster Europe. Registered Address: Centennial House, Building 4.5, Frimley Business Park, Frimley, Surrey, GU16 7SG, United Kingdom. Registered in England and Wales. Company Registration Number: 02636775.

HYSTER,  and FORTENS are registered trademarks in the European Union and certain other jurisdictions.

MONOTROL® is a registered trademark, and DURAMATCH and  are trademarks in the United States and in certain other jurisdictions.

Hyster products are subject to change without notice. Lift trucks illustrated may feature optional equipment.