



**STRONG PARTNERS.
TOUGH TRUCKS.™**



HIGH CAPACITY FORKLIFT TRUCKS

H16XM-9, H16XM-12, H18XM-7.5, H18XM-9



16,000KG @ 900 & 1200MM, 18,000KG @ 750 & 900MM

MAST AND CAPACITY INFORMATION

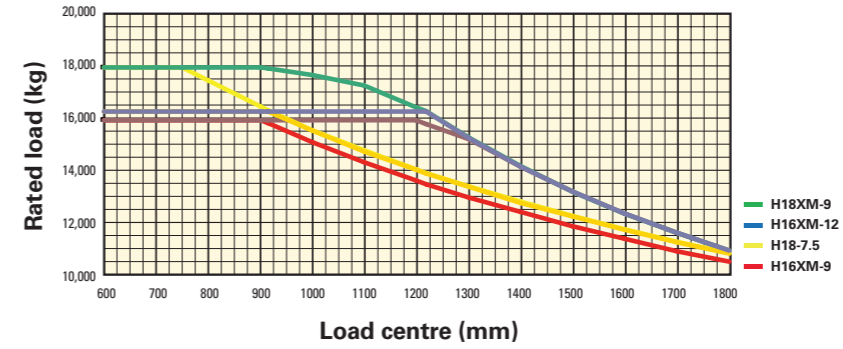
2-Stage NFL	Lift height h_3 (mm)	Lowered height h_1 (mm)	Free lift height h_2 (mm)	Extended height h_4 (mm)	Dual Function carriage with Side Shift and Fork positioner			
					H16XM-9 @900 mm LC	H16XM-12 @1200 mm LC	H18XM-7.5 @750 mm LC	H18XM-9 @900 mm LC
	3,884	3,680	0	5,622	16,000	16,000	18,000	18,000
	4,494	3,985	0	6,232	16,000	16,000	18,000	18,000
	5,306	4,390	0	7,044	16,000	16,000	18,000	18,000
	6,119 *	4,790	0	7,858	15,700	15,700	17,650	17,650

POWERTRAINS

1.1	Manufacturer (abbreviation)	H16-18XM-7.5-9-12	
1.2	Manufacturer's type designation	Diesel	
7.1	Engine manufacturer/type	Cummins QSB 6.7	
7.2	Engine power according to ISO1585 (nominal)	122 @ 2.300	
7.2.1	Engine power according to ISO1585 (maximum)	125 @ 2.100	
7.3	Rated speed	2,300	
7.3.1	Torque (maximum)	732 @ 1.500	
7.4	Number of cylinders/displacements	6	6,690
7.5	Fuel consumption according to VDI cycle	☞	
7.8	Alternator	120	
7.10	Battery voltage/nominal capacity	24	102
8.1	Type of drive unit	Torque Converter	
8.2	Transmission manufacturer/type	ZF	3 WG 161
8.6	Wheel drive/drive axle manufacturer/type	KESSLER	DL81-WB
8.11	Service brake	Oil immersed disc	
8.12	Parking brake	dry disc on drive axle	

RATED CAPACITIES

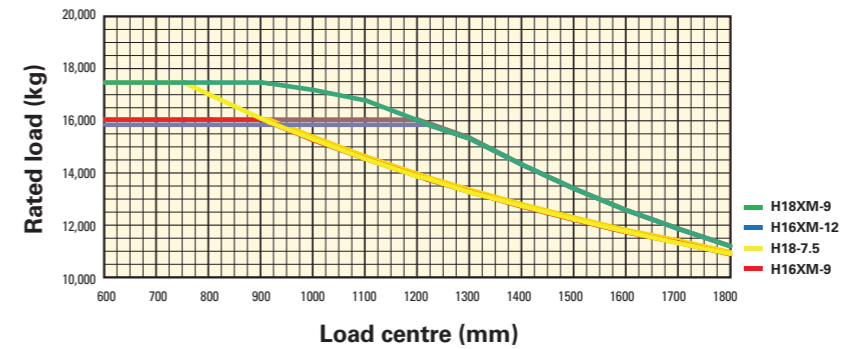
Pin Type Carriage



Load centre: Distance from front of forks to centre of gravity of load.

Rated load: Based on vertical mast.

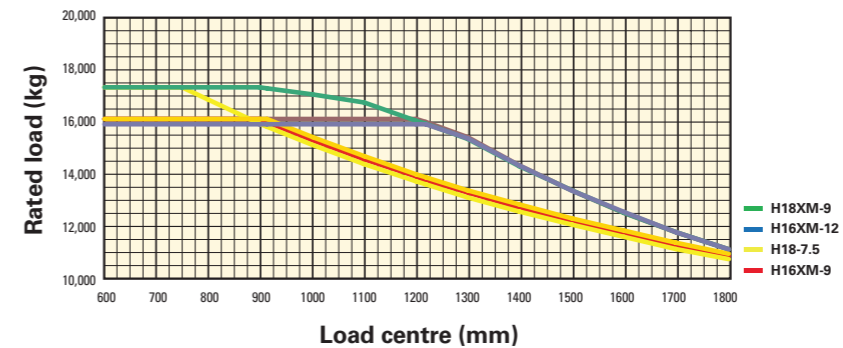
Pin type Side Shift frame carriage



Load centre: Distance from front of forks to centre of gravity of load.

Rated load: Based on vertical mast.

Hook type Dual Function carriage with Side Shift and Fork positioner for quick disconnect forks



Load centre: Distance from front of forks to centre of gravity of load.

Rated load: Based on vertical mast.

NOTE:

Specifications are affected by the condition of the vehicle and how it is equipped, as well as the nature and condition of the operating area. Inform your dealer of the nature and condition of the intended operating area when purchasing your Hyster Truck.

- ✦ (DF-SS-FP carriage) QD. deduct 10 mm for fork section 90 x 250 (instead 100 x 200)
- Weights are based on the following specifications: Complete truck with cab, pneumatic tyres, mast, carriage and forks
- Unladen with new tyres
- † Bottom of forks
- +/- 3% tolerance depend on tyre inflated pressure / or tyre brand
- Full suspension seat in depressed position
- ▣ With 100 x 200 section deduct 10 mm if 90 x 250 section.
- ◆ Stacking aisle width is based on the VDI standard calculation as shown on illustration. The British Industrial Truck Association recommends the addition of 100 mm to the total clearance (dimension a) for extra operating margin at the rear of truck.
- ◇ Distance centre truck to centre of internal turning radius
- * Travel speed laden/unladen limited at 25 km/h as factory default
- at 1.6 km/h.
- † Gradeability figures are provided for comparison of tractive performance, but are not intended to endorse the operation of vehicle on the stated inclines. Follow instructions in the operating manual regarding operation on inclines.
- * at stall.
- ⊕ Measured according to the test cycles and based on the weighting values contained in EN12053.
- ◆ Measured with low mount exhaust option
- Measured with high mount exhaust option
- ☞ Data available on request, as values are dependent on application

MAST TABLE:

- * 6,200 mm mast equipped with 350 mm sideshift carriage

NOTICE:

Care must be exercised when handling elevated loads. When the carriage and/or load is elevated, truck stability is reduced. It is important that the mast tilt in either direction is kept to a minimum when loads are elevated.

Operators must be trained and must read, understand and follow the instructions contained in the Operating Manual.

All values are nominal values and they are subject to tolerances. For further information, please contact the manufacturer.

Hyster products are subject to change without notice. Lift trucks illustrated may feature optional equipment. Values may vary with alternative configurations.

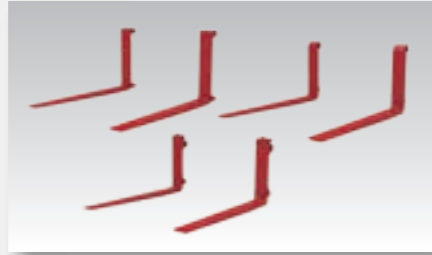
CE Safety:

This truck conforms to the current EU requirements.

FRONT END EQUIPMENT



Range of 2 stage NFL masts



Pin Type, Hook Type integral and Hook Type Quick Disconnect forks



2.540 mm wide Pin Type carriage



2.540 mm wide Pin Type carriage with independent Fork Positioner



2.540 mm wide Pin Type Side Shift frame carriage



2.540 mm wide Pin Type Side Shift frame carriage with independent Fork Positioner



2.540 mm wide Hook Type Dual Function carriage with Side Shift and Fork Positioner (FP can be as independent or simultaneously acting)



2.540 mm wide Hook Type Dual Function carriage with Side Shift and Fork Positioner for Quick Disconnect forks (FP can be as independent or simultaneously acting)

STANDARD EQUIPMENT

- Cummins QSB 6.7 122 kW / max 125 kW @ 2.300–2.100 rpm Turbo Diesel Engine
 - Stage IV Compliant
 - ECO-eLo / HiP performance modes
 - Hibernate Idle
 - Cooling fan with fan clutch
- ZF WG 161 3 speed Hydrodynamic Transmission
- 2-Stage NFL Mast with maximum fork height of 6119 mm
- 2.540 mm wide Side Shift and Fork Positioner carriage
- Oil-immersed Brakes
- SAUER-DANFOSS dual piston variable displacement pump 120 ccm (60 + 60 ccm)
- KESSLER DL81 PL478-NLB Drive axle with oil-immersed disc brake system
- 4-way hydraulic controls with Levers combination without clamping function
- Mast Tilt: 6° Forward / 10° Back
- Directional Control Lever
- Overhead Guard Featuring:
 - Seat-Side Hydraulic Control
 - Multifunction Display Panel
 - Interior Wide Angle Mirrors
 - Telescoping & Tilting Steering Column
 - Floor Mat
 - Isolated Mounting for Low Noise and Vibration
 - Handrails for Operator Entry and Exit
- Tyres – Drive and Steer
 - 12.00-20 20PR Trelleborg T-900 Bias Pneumatic tyres
- Steering Wheel with Spinner Knob
- Electric Horn
- Mechanical Suspension Vinyl Seat with integrated adjustable armrest and 2-point black seat belt
- Air Intake with Sy-Klone pre cleaner and Rain Cap
- Low mount exhaust
- 24 V Electrical System
- 120 Amp Alternator
- Manual Tilt Operator Compartment for Service Access
- Self-adjustable back up Alarm volume > 5dB(A) ambient
- Amber strobe light - Ignition key and switch activated
- Light Kit 2:
 - LED rear cluster with stop, reverse and direction light
 - 2 x Halogen working lights mounted on mast
 - 2 x Halogen drive lights, 2 direction / marker lights mounted on front fender
 - 2 x Halogen working lights mounted rear of the cabin, direction and position light with hazard function
- Non-locking Fuel Cap
- Literature Package
 - Operator's Manual
- Warranty
 - 12 Months / 2,000 Hours Manufacturer's Warranty

OPTIONAL EQUIPMENT

- 2-Stage NFL Masts with maximum fork heights up to 6119 mm
- 2-Stage FFL Masts with maximum fork heights up to 4300 mm (SPED)
- 3-Stage FFL Masts with maximum fork heights up to 7000 mm (SPED)
- Carriages for 2 Stage NFL, 2 Stage FFL and 3 stage FFL masts
 - 2.540 mm wide Pin Type carriage
 - 2.540 mm wide Pin Type carriage with independent Fork Positioner
 - 2.540 mm wide Pin Type Side Shift frame carriage
 - 2.540 mm wide Pin Type Side Shift frame carriage with independent fork positioner
 - 2.540 mm wide Hook Type Dual Function carriage with Side Shift and Fork Positioner (FP can be as independent or simultaneously acting)
 - 2.540 mm wide Hook Type Dual Function carriage with Side Shift and Fork Positioner for Quick Disconnect forks (FP can be as independent or simultaneously acting)
 - 2.540 mm wide Hook Type Dual Function carriage with Side Shift and simultaneous Fork Positioner for Quick Disconnect forks and 2 auxiliary valves to control a hang on attachment with 2 hydraulic functions
- Up to 6-way hydraulic control functions to control via 4 levers and 2 switches
- Hydraulic Control Joystick with max 5-way function
- Mast Tilt:
 - 15° Forward / 10° Back
 - 10.5° Forward / 12° Back
- MONOTROL™ Pedal
- Tyres – Drive and Steer
 - 12.00-R20 MICHELIN XZM radial
 - 12.00-20 20PR HAULER Bias Pneumatic tyres
- Rear Mud Flaps
- Steer Wheel Nut Protection
- Enclosed Cab with or without Air Conditioning includes:
 - Seat-Side Hydraulic Control Levers
 - Multifunction Display Panel
 - Interior Wide Angle Mirrors
 - Telescoping & Tilting Steering Column
 - I-style Front Screen Wiper
 - H-style double front Screen Wiper
 - Floor Mat
 - 24–12 V DC/DC Converter with 1 or 2 sockets
 - Top & Rear Wipers
 - Heater
 - Re-circulation Fan
- Enclosed Cab options
 - Top and rear sun shades
 - H-style Front screen Wiper
 - Temperature controller
 - Air conditioner, manually controlled
 - Air conditioner, automatically controlled
 - High Performance Air conditioner, manually controlled
 - High Performance Air conditioner, automatically controlled
 - Reading light
 - Trainer seat
 - IT console for on-board computer
 - Storage console
 - H-style Front Screen Wiper
 - Heated top window
 - Engine start interlock
 - Radio preparation, inclusive wire, two speakers and antenna
 - Rain top for OHG
 - Wire mesh protection guard on Top of cab
 - External Mirror right and left
- Seats
 - Mechanical, Full Suspension High backrest Vinyl or Cloth Seat
 - Pneumatic, Full Suspension Vinyl or Cloth Seat
 - Pneumatic, Full Suspension High backrest Vinyl or Cloth Seat
 - Deluxe Air Suspended Full Suspension Cloth Seat
 - Heated Deluxe Air Suspended Full Suspension Cloth Seat
- 3-point seat belt for Deluxe Seat
- Powered Tilt Operator Compartment
- Lockable Battery Disconnect Switch
- High mount exhaust
- Various Light Kits
- Hydraulic Accumulator
- Lockable diesel fuel cap
- Lifting eye shackles
- Engine Block Heater (230V)
- Traction Speed Limiter
- Automatic Engine Shutdown
- Hydraulic temperature protection
- Pressure compensated lowering
- Hyster Tracker Wireless Asset Management system

Other options available through Special Products Engineering Department (SPED). Contact Hyster for details.

STRONG PARTNERS. TOUGH TRUCKS.™

FOR DEMANDING OPERATIONS, EVERYWHERE.

Hyster supplies a complete range of warehouse equipment, IC and electric counterbalanced trucks, container handlers and reach stackers. Hyster is committed to being much more than a lift truck supplier.

Our aim is to offer a complete partnership capable of responding to the full spectrum of material handling issues: Whether you need professional consultancy on your fleet management, fully qualified service support, or reliable parts supply, you can depend on Hyster.

Our network of highly trained dealers provides expert, responsive local support. They can offer cost-effective finance packages and introduce effectively managed maintenance programmes to ensure that you get the best possible value. Our business is dealing with your material handling needs so you can focus on the success of your business today and in the future.



HYSTER EUROPE

Centennial House, Frimley Business Park, Frimley, Surrey, GU16 7SG, England.


Tel: +44 (0) 1276 538500




www.hyster.eu infoeurope@hyster.com [/HysterEurope](https://www.facebook.com/HysterEurope) [@HysterEurope](https://twitter.com/HysterEurope) [/HysterEurope](https://www.youtube.com/HysterEurope) www.hyster-bigtrucks.com

HYSTER-YALE UK LIMITED trading as Hyster Europe. Registered Address: Centennial House, Building 4.5, Frimley Business Park, Frimley, Surrey, GU16 7SG, United Kingdom.

Registered in England and Wales. Company Registration Number: 02636775.

HYSTER,  and FORTENS are registered trademarks in the European Union and certain other jurisdictions.

MONOTROL® is a registered trademark, and DURAMATCH and  are trademarks in the United States and in certain other jurisdictions.

Hyster products are subject to change without notice. Lift trucks illustrated may feature optional equipment.